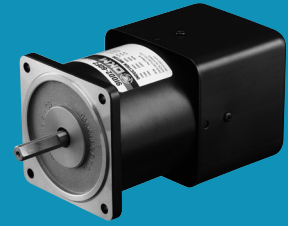


# Speed Control Reversible Motor



## Index

<b>Speed Control Reversible Motor 6W (□60mm)</b>	<b>B-257</b>
<b>Speed Control Reversible Motor 6W (□70mm)</b>	<b>B-259</b>
<b>Speed Control Reversible Motor 10W (□70mm)</b>	<b>B-261</b>
<b>Speed Control Reversible Motor 15W (□70mm)</b>	<b>B-263</b>
<b>Speed Control Reversible Motor 15W (□80mm)</b>	<b>B-265</b>
<b>Speed Control Reversible Motor 25W (□80mm)</b>	<b>B-268</b>
<b>Speed Control Reversible Motor 40W (□90mm)</b>	<b>B-271</b>
<b>Speed Control Reversible Motor 60W (□90mm)</b>	<b>B-274</b>
<b>Speed Control Reversible Motor 90W (□90mm)</b>	<b>B-278</b>
<b>Speed Control Reversible Motor 120W (□90mm)</b>	<b>B-282</b>

# B AC Motors

S.C. Reversible Motor 6W (□60mm)

## 6W Speed Control Reversible Motor 6W(□60mm)

### Motor 사양

Model 6SRDG*-6G: Gear Type Shaft 6SRDD*-6: D-Cut Type Shaft	Output W	Voltage V	Frequency Hz	Poles	Duty	Speed Range r/min	Starting Torque kgfcm N.m		Permissible Torque				Capacitor μF / VAC
									1200r/min		90r/min		
									kgfcm	N.m	kgfcm	N.m	
6SRDG1-6G	6	1φ 110	60	4	30min.	90-1700	0.36	0.036	0.54	0.054	0.36	0.036	3.0 / 250
6SRDG2-6G	6	1φ 220	60	4	30min.	90-1700	0.40	0.040	0.56	0.056	0.39	0.039	1.0 / 450
6SRDGE-6G	6	1φ 220	50	4	30min.	90-1400	0.32	0.032	0.47	0.047	0.31	0.031	1.0 / 450
		1φ 240									0.33	0.033	

- 1) 모터 모델명 \* 자리에는 전압코드가 들어갑니다.
- 2) Impedance Protected Type입니다.
- 3) Gear Type Shaft는 감속기 부착용이며 D-Cut Type Shaft는 모터 단독 사용시의 출력축 입니다.

### 감속기 부착 시 최대허용토크

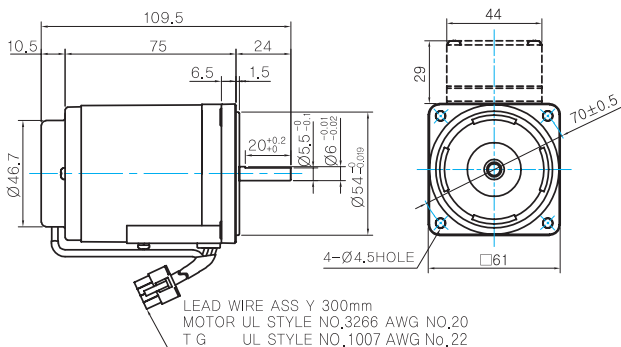
Motor Model	Gear box Model	회전 속도 r/min	전압 V	주파수 Hz	감속비	3	3.6	5	6	7.5	9	10	12.5	15	18	20	25	30	36	40	50	60	75	90	100	120	150	180	200	250				
6SRDG*-6G	6GBD □MH	1200	110	60	kgfcm	1.3	1.6	2.2	2.6	3.3	3.9	4.4	5.5	6.6	7.9	7.9	9.9	11.8	14.2	15.8	17.8	21.4	26.7	29.4	30.0	30.0	30.0	30.0	30.0	30.0	30.0			
						N.m	0.13	0.15	0.21	0.26	0.32	0.39	0.43	0.54	0.64	0.77	0.77	0.97	1.16	1.39	1.55	1.75	2.10	2.62	2.94	2.94	2.94	2.94	2.94	2.94	2.94	2.94	2.94	2.94
						N.m	0.13	0.16	0.22	0.27	0.33	0.40	0.44	0.56	0.67	0.80	0.80	1.00	1.20	1.44	1.60	1.81	2.17	2.72	2.94	2.94	2.94	2.94	2.94	2.94	2.94	2.94	2.94	2.94
		90			kgfcm	0.9	1.0	1.5	1.7	2.2	2.6	2.9	3.6	4.4	5.2	5.3	6.6	7.9	9.5	10.5	11.9	14.3	17.8	21.4	23.8	28.5	30.0	30.0	30.0	30.0	30.0	30.0	30.0	
						N.m	0.09	0.10	0.14	0.17	0.21	0.26	0.29	0.36	0.43	0.51	0.52	0.64	0.77	0.93	1.03	1.16	1.40	1.75	2.10	2.33	2.79	2.94	2.94	2.94	2.94	2.94	2.94	2.94
						N.m	0.09	0.11	0.15	0.19	0.23	0.28	0.31	0.39	0.46	0.56	0.56	0.70	0.84	1.00	1.12	1.26	1.51	1.89	2.27	2.52	2.94	2.94	2.94	2.94	2.94	2.94	2.94	30.0
	50	kgfcm	0.8	0.9	1.3	1.5	1.9	2.3	2.5	3.1	3.8	4.5	4.5	5.7	6.8	8.1	9.1	10.2	12.3	15.3	18.4	20.5	24.6	30.0	30.0	30.0	30.0	30.0	30.0	30.0				
			N.m	0.07	0.09	0.12	0.15	0.18	0.22	0.25	0.31	0.37	0.44	0.44	0.55	0.67	0.80	0.89	1.00	1.20	1.50	1.80	2.01	2.41	2.94	2.94	2.94	2.94	2.94	2.94	2.94			
			N.m	0.08	0.09	0.12	0.15	0.19	0.22	0.25	0.31	0.37	0.44	0.44	0.55	0.67	0.80	0.89	1.00	1.20	1.50	1.80	2.01	2.41	2.94	2.94	2.94	2.94	2.94	2.94	2.94			

- 1) 모터 모델명 \* 자리에는 전압코드가 들어갑니다.
- 2) 감속기 모델명 □ 안에는 감속비가 들어갑니다.
- 3) 위의 표에서 색칠된 범위의 감속비를 선택했을 때 감속기의 출력축은 모터의 출력축과 같은 방향으로 회전합니다. 흰색 바탕 범위의 감속비에서는 감속기 출력축은 모터 출력축의 회전방향과 반대방향으로 회전합니다.
- 4) 회전속도(r/min)는 모터의 동기회전속도(50Hz:1500r/min, 60Hz:1800r/min)를 감속비로 나누어 계산합니다. 실제 회전속도는 부하의 크기에 따라 표시보다 2~20% 정도 느립니다.

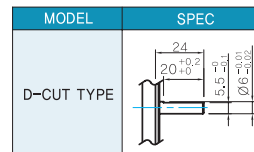
### Dimensions

#### MOTOR ONLY

● MOTOR MODEL: 6SRDD□-6 (NO FAN)



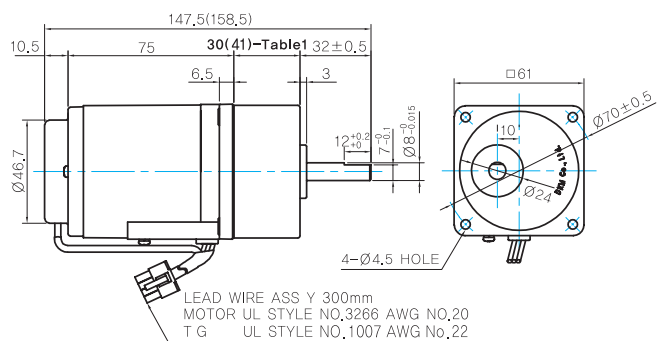
#### MOTOR OUTPUT SHAFT



## GEARED MOTOR

### G TYPE GEARBOX

- MOTOR MODEL: 6SRDG□-6G (NO FAN)
- GEARBOX MODEL: 6GBD□MH



### GEARBOX OUTPUT SHAFT

MODEL	SPEC
D-CUT TYPE	

### WEIGHT

PART	WEIGHT(Kg)
MOTOR	0,75
GEAR BOX	
6GBD3MH ~ 6GBD18MH	0,3
6GBD20MH ~ 6GBD40MH	0,32
6GBD50MH ~ 6GBD250MH	0,34

### 30(41)-Table1

SIZE(mm)	GEAR RATIO
30	6GBD3MH - 6GBD18MH
41	6GBD20MH - 6GBD250MH

## Motor Images







# B AC Motors

S.C. Reversible Motor 10W (□70mm)

## 10W Speed Control Reversible Motor 10W(□70mm)

### Motor 사양

Model 7SRDG□-10G: Gear Type Shaft 7SRDD□-10: D-Cut Type Shaft	Output W	Voltage V	Frequency Hz	Poles	Duty	Speed Range r/min	Starting Torque kgfcm N.m		Permissible Torque				Capacitor μF / VAC
									1200r/min		90r/min		
									kgfcm	N.m	kgfcm	N.m	
7SRDG1(A)-10G	10	1φ110	60	4	30min.	90-1700	0.60	0.060	0.75	0.075	0.42	0.042	3.5 / 250
7SRDG2(D)-10G	10	1φ220	60	4	30min.	90-1700	0.60	0.060	0.75	0.075	0.42	0.042	1.2 / 450
7SRDGE-10G	10	1φ220	50	4	30min.	90-1400	0.58	0.058	0.74	0.074	0.41	0.041	1.2 / 450
		1φ240											

- 1) 모터 모델명 □ 안에는 전압코드가 들어갑니다.
- 2) 전압코드 A, D, E는 TP(Thermal Protector) 부착 사양입니다.
- 3) Gear Type Shaft는 감속기 부착용이며 D-Cut Type Shaft는 모터 단독 사용시의 출력축 입니다.

### 감속기 부착 시 최대허용토크

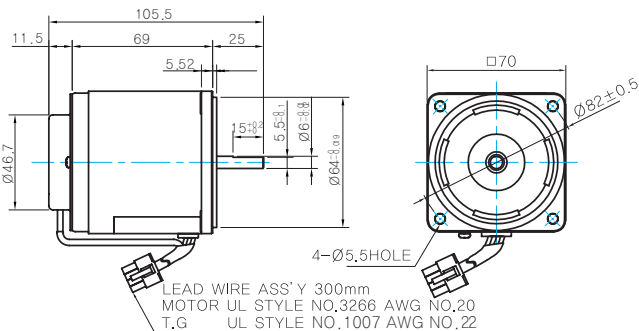
Motor Model	Gear box Model	회전 속도 r/min	전압 V	주파수 Hz	감속비	3	3.6	5	6	7.5	9	10	12.5	15	18	20	25	30	36	40	50	60	75	90	100	120	150	180	200		
7SRDG*-10G	7GBK □BMH	1200	110	60	kgfcm	1.8	2.2	3.0	3.6	4.6	5.5	6.1	7.6	9.1	10.9	11.0	13.7	16.4	19.7	21.9	24.8	29.7	37.1	44.6	49.5	50.0	50.0	50.0	50.0		
					N.m	0.18	0.21	0.30	0.36	0.45	0.54	0.60	0.74	0.89	1.07	1.07	1.34	1.61	1.93	2.15	2.43	2.91	3.64	4.37	4.85	4.90	4.90	4.90	4.90	4.90	4.90
					kgfcm	1.8	2.2	3.0	3.6	4.5	5.4	6.0	7.5	9.0	10.8	10.8	13.5	16.2	19.4	21.6	24.4	29.3	36.6	44.0	48.8	50.0	50.0	50.0	50.0	50.0	50.0
		N.m	0.18	0.21	0.30	0.36	0.45	0.54	0.60	0.74	0.89	1.07	1.07	1.34	1.61	1.93	2.15	2.43	2.91	3.64	4.37	4.85	4.90	4.90	4.90	4.90	4.90	4.90	4.90	4.90	
		kgfcm	1.8	2.2	3.0	3.6	4.5	5.4	6.0	7.5	9.0	10.8	10.8	13.5	16.2	19.4	21.6	24.4	29.3	36.6	44.0	48.8	50.0	50.0	50.0	50.0	50.0	50.0	50.0	50.0	
		N.m	0.18	0.21	0.29	0.35	0.44	0.53	0.59	0.73	0.88	1.06	1.06	1.32	1.59	1.91	2.12	2.39	2.87	3.59	4.31	4.79	4.90	4.90	4.90	4.90	4.90	4.90	4.90	4.90	4.90
90	60	110	kgfcm	1.0	1.2	1.7	2.0	2.6	3.1	3.4	4.3	5.1	6.1	6.1	7.7	9.2	11.0	12.3	13.9	16.6	20.8	24.9	27.7	33.3	41.6	49.9	50.0	50.0	50.0		
			N.m	0.10	0.12	0.17	0.20	0.25	0.30	0.33	0.42	0.50	0.60	0.60	0.75	0.90	1.08	1.20	1.36	1.63	2.04	2.44	2.72	3.26	4.07	4.89	4.90	4.90	4.90		
			kgfcm	1.0	1.2	1.7	2.0	2.6	3.1	3.4	4.3	5.1	6.1	6.1	7.7	9.2	11.0	12.3	13.9	16.6	20.8	24.9	27.7	33.3	41.6	49.9	50.0	50.0	50.0		
		N.m	0.10	0.12	0.17	0.20	0.25	0.30	0.33	0.42	0.50	0.60	0.60	0.75	0.90	1.08	1.20	1.36	1.63	2.04	2.44	2.72	3.26	4.07	4.89	4.90	4.90	4.90			
		kgfcm	1.0	1.2	1.7	2.0	2.5	3.0	3.3	4.2	5.0	6.0	6.0	7.5	9.0	10.8	12.0	13.5	16.2	20.3	24.4	27.1	32.5	40.6	48.7	50.0	50.0	50.0			
		N.m	0.10	0.12	0.16	0.20	0.24	0.29	0.33	0.41	0.49	0.59	0.59	0.73	0.88	1.06	1.17	1.33	1.59	1.99	2.39	2.65	3.18	3.98	4.77	4.90	4.90	4.90	4.90		

- 1) 모터 모델명 \* 자리에는 전압코드가 들어갑니다.
- 2) 감속기 모델명 □ 안에는 감속비가 들어갑니다.
- 3) 위의 표에서 색칠된 범위의 감속비를 선택했을 때 감속기의 출력축은 모터의 출력축과 같은 방향으로 회전합니다. 흰색 바탕 범위의 감속비에서는 감속기 출력축은 모터 출력축의 회전방향과 반대방향으로 회전합니다.
- 4) 회전속도(r/min)는 모터의 동기회전속도(50Hz:1500r/min, 60Hz:1800r/min)를 감속비로 나누어 계산합니다. 실제 회전속도는 부하의 크기에 따라 표시보다 2~20% 정도 느립니다.

### Dimensions

#### MOTOR ONLY

● MOTOR MODEL: 7SRDD□-10 (NO FAN)



#### MOTOR OUTPUT SHAFT

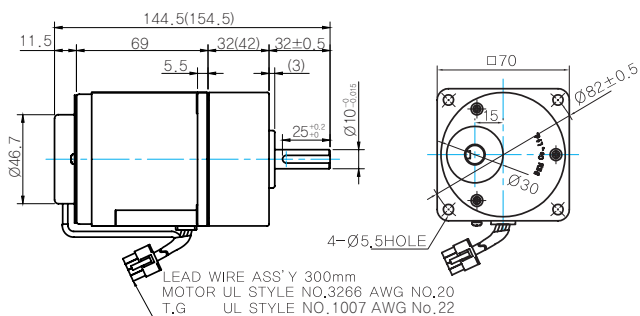
MODEL	SPEC
D-CUT TYPE	

## GEARED MOTOR

### G TYPE GEARBOX

● MOTOR MODEL:  
7SRDG□-10G (NO FAN)

● GEARBOX MODEL:  
7GBK□BMH



### GEARBOX OUTPUT SHAFT

MODEL	SPEC
KEY TYPE	

### KEY SPEC

GEARBOX	

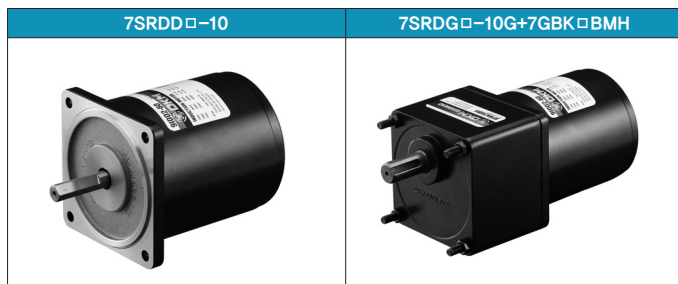
### WEIGHT

PART		WEIGHT(Kg)
MOTOR		0,93
GEAR BOX	7GBK3BMH - 7GBK18BMH	0,38
	7GBK20BMH - 7GBK40BMH	0,48
	7GBK50BMH - 7GBK200BMH	0,53

### 32(42)-Table1

SIZE(mm)	GEAR RATIO
32	7GBK3BMH - 7GBK18BMH
42	7GBK20BMH - 7GBK200BMH

## Motor Images





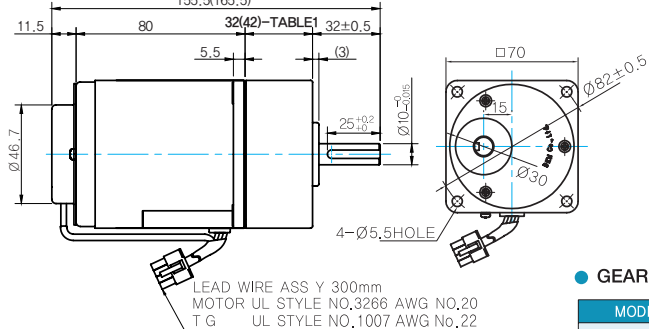


## GEARED MOTOR

### G TYPE GEARBOX

● MOTOR MODEL: 7SRDG□-15G (NO FAN)  
155.5(165.5)

● GEARBOX MODEL: 7GBK□BMH



### GEARBOX OUTPUT SHAFT

MODEL	SPEC
KEY TYPE	<p>Technical drawing of the gear output shaft showing a diameter of Ø10<sup>+0.005</sup> and a key with a width of 3<sup>+0.02</sup> and a height of 25<sup>+0.02</sup>.</p>

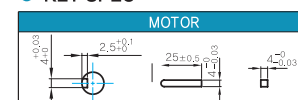
### WEIGHT

PART	WEIGHT(Kg)	
MOTOR	1.20	
GEAR BOX	7GBK3BMH ~ 7GBK18BMH	0.38
	7GBK20BMH ~ 7GBK40BMH	0.48
	7GBK50BMH ~ 7GBK200MH	0.53

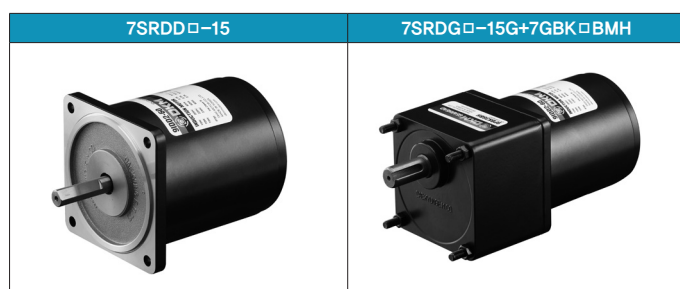
### 32(42)-Table1

SIZE(mm)	GEAR RATIO
32	7GBK3BMH - 7GBK18BMH
42	7GBK20BMH - 7GBK200BMH

### KEY SPEC



## Motor Images



# B AC Motors

S.C. Reversible Motor 15W (□80mm)

## 15W Speed Control Reversible Motor 15W(□80mm)

### Motor 사양

Model 8SRDG*-15□: Gear Type Shaft 8SRDD*-15: D-Cut Type Shaft	Output W	Voltage V	Frequency Hz	Poles	Duty	Speed Range r/min	Starting Torque		Permissible Torque				Capacitor μF / VAC
							kgfcm	N.m	1200r/min		90r/min		
Lead Wire Type									kgfcm	N.m	kgfcm	N.m	
8SRDG1(A)-15□	15	1φ110	60	4	30min.	90-1700	0.85	0.085	1.40	0.140	0.50	0.050	6.0 / 450
8SRDG2(D)-15□	15	1φ220	60	4	30min.	90-1700	0.85	0.085	1.40	0.140	0.50	0.050	1.5 / 450
8SRDGE-15□	15	1φ220	50	4	30min.	90-1400	0.75	0.075	1.30	0.130	0.48	0.048	1.5 / 450
		0.85					0.085	1.40	0.140	0.52	0.052		

- 1) 모터 모델명 \* 자리에는 전압코드가, □ 안에는 부착되는 감속기의 모델 타입명이 들어갑니다.
- 2) 전압코드 A, D, E는 TP(Thermal Protector) 부착 사양입니다.
- 3) Gear Type Shaft는 감속기 부착용이며 D-Cut Type Shaft는 모터 단독 사용시의 출력축 입니다.

### 감속기 부착 시 최대허용토크

Motor Model	Gear box Model	회전 속도 r/min	전압 V	주파수 Hz	감속비	3	3.6	5	6	7.5	9	10	12.5	15	18	20	25	30	36	40	50	60	75	90	100	120	150	180	200	250	300	360			
8SRDG*-15G	8GBK □BMH	1200	110	60	kgfcm	3.4	4.1	5.7	6.8	8.5	10.2	11.3	14.2	17.0	20.4	20.4	25.6	30.7	36.8	40.9	46.2	55.4	69.3	80.0	80.0	80.0	80.0	80.0	80.0	80.0	80.0	80.0	80.0		
					N.m	0.33	0.40	0.56	0.67	0.83	1.00	1.11	1.39	1.67	2.00	2.00	2.50	3.00	3.61	4.01	4.53	5.43	6.79	7.84	7.84	7.84	7.84	7.84	7.84	7.84	7.84	7.84	7.84	7.84	7.84
					kgfcm	3.4	4.1	5.7	6.8	8.5	10.2	11.3	14.2	17.0	20.4	20.4	25.6	30.7	36.8	40.9	46.2	55.4	69.3	80.0	80.0	80.0	80.0	80.0	80.0	80.0	80.0	80.0	80.0	80.0	80.0
		N.m	0.33	0.40	0.56	0.67	0.83	1.00	1.11	1.39	1.67	2.00	2.00	2.50	3.00	3.61	4.01	4.53	5.43	6.79	7.84	7.84	7.84	7.84	7.84	7.84	7.84	7.84	7.84	7.84	7.84	7.84	7.84	7.84	
		kgfcm	1.2	1.5	2.0	2.4	3.0	3.6	4.1	5.1	6.1	7.3	7.3	9.1	11.0	13.1	14.6	16.5	19.8	24.8	29.7	33.0	39.6	49.5	59.4	66.0	80.0	80.0	80.0	80.0	80.0	80.0	80.0	80.0	
		N.m	0.12	0.14	0.20	0.24	0.30	0.36	0.40	0.50	0.60	0.71	0.72	0.89	1.07	1.29	1.43	1.62	1.94	2.43	2.91	3.23	3.88	4.85	5.82	6.47	7.84	7.84	7.84	7.84	7.84	7.84	7.84	7.84	
	kgfcm	1.2	1.5	2.0	2.4	3.0	3.6	4.1	5.1	6.1	7.3	7.3	9.1	11.0	13.1	14.6	16.5	19.8	24.8	29.7	33.0	39.6	49.5	59.4	66.0	80.0	80.0	80.0	80.0	80.0	80.0	80.0	80.0		
	N.m	0.12	0.14	0.20	0.24	0.30	0.36	0.40	0.50	0.60	0.71	0.72	0.89	1.07	1.29	1.43	1.62	1.94	2.43	2.91	3.23	3.88	4.85	5.82	6.47	7.84	7.84	7.84	7.84	7.84	7.84	7.84	7.84		
	kgfcm	1.3	1.5	2.1	2.5	3.2	3.8	4.2	5.3	6.3	7.6	7.6	9.5	11.4	13.7	15.2	17.2	20.6	25.7	30.9	34.3	41.2	51.5	61.8	68.6	80.0	80.0	80.0	80.0	80.0	80.0	80.0	80.0		
	N.m	0.12	0.15	0.21	0.25	0.31	0.37	0.41	0.52	0.62	0.74	0.74	0.93	1.12	1.34	1.49	1.68	2.02	2.52	3.03	3.36	4.04	5.05	6.05	6.73	7.84	7.84	7.84	7.84	7.84	7.84	7.84	7.84		

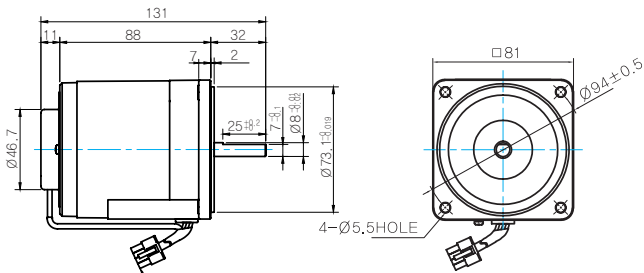
Motor Model	Gearbox Model	회전 속도 r/min	전압 V	주파수 Hz	감속비	10	12	15	18	25	30	36	50	60
8SRDG*-15W	8WD □BL/□BR/□BRL	1200	110	60	kgfcm	11.5	13.4	16.2	18.6	24.5	27.7	32.3	42.0	46.2
					N.m	1.13	1.32	1.58	1.83	2.40	2.72	3.16	4.12	4.53
					kgfcm	11.6	13.9	17.4	20.9	29.1	34.9	41.8	58.1	69.7
		N.m	1.14	1.37	1.71	2.05	2.85	3.42	4.10	5.69	6.83			
		kgfcm	11.5	13.4	16.2	18.6	24.5	27.7	32.3	42.0	46.2			
		N.m	1.13	1.32	1.58	1.83	2.40	2.72	3.16	4.12	4.53			
	kgfcm	4.1	4.8	5.8	6.7	8.8	9.9	11.5	15.0	16.5				
	N.m	0.40	0.47	0.57	0.65	0.86	0.97	1.13	1.47	1.62				
	kgfcm	4.1	4.8	5.8	6.7	8.8	9.9	11.5	15.0	16.5				
	N.m	0.40	0.47	0.57	0.65	0.86	0.97	1.13	1.47	1.62				
	kgfcm	4.3	5.0	6.0	6.9	9.1	10.3	12.0	15.6	17.2				
	N.m	0.42	0.49	0.59	0.68	0.89	1.01	1.17	1.53	1.68				

- 1) 모터 모델명 □ 안에는 전압코드가 들어갑니다.
- 2) 감속기 모델명 □ 안에는 감속비가 들어갑니다.
- 3) 위의 표에서 색칠된 범위의 감속비를 선택했을 때 감속기의 출력축은 모터의 출력축과 같은 방향으로 회전합니다. 흰색 바탕 범위의 감속비에서는 감속기 출력축은 모터 출력축의 회전방향과 반대방향으로 회전합니다.
- 4) 회전속도(r/min)는 모터의 동기회전속도(50Hz:1500r/min, 60Hz:1800r/min)를 감속비로 나누어 계산합니다. 실제 회전속도는 부하의 크기에 따라 표시보다 2~20% 정도 느립니다.

## Dimensions

### MOTOR ONLY

- MOTOR MODEL: 8SRDD□-15 (NO FAN)



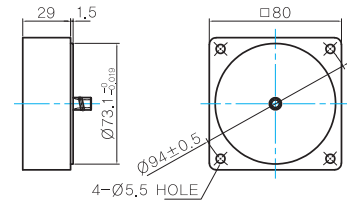
LEAD WIRE ASS Y 300mm  
MOTOR UL STYLE NO.3271 AWG NO.20  
T.G UL STYLE NO.1007 AWG NO.22

### MOTOR OUTPUT SHAFT

MODEL	SPEC
D-CUT TYPE	

### 중간감속기

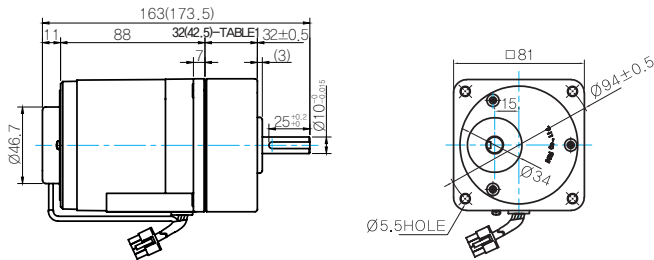
- MODEL: 8XD10□□



## GEARED MOTOR

### G TYPE GEARBOX

- MOTOR MODEL: 8SRD□-15G (NO FAN)
- GEARBOX MODEL: 8GBK□BMH



LEAD WIRE ASS Y 300mm  
MOTOR UL STYLE NO.3271 AWG NO.20  
T.G UL STYLE NO.1007 AWG NO.22

### GEARBOX OUTPUT SHAFT

MODEL	SPEC
KEY TYPE	

### KEY SPEC

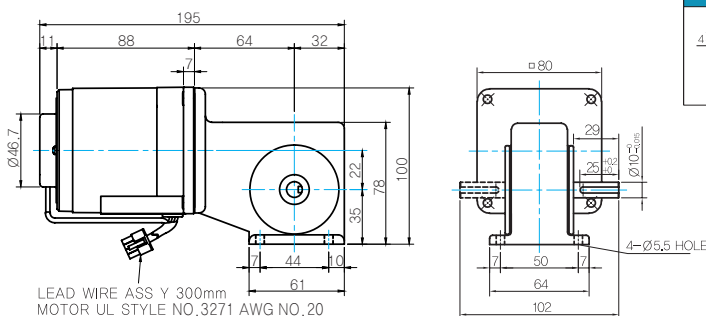
GEARBOX	

### 32(42.5)-Table1

SIZE(mm)	GEAR RATIO
32	8GBK3BMH - 8GBK18BMH
42.5	8GBK20BMH - 8GBK360BMH

### W TYPE GEARBOX

- MOTOR MODEL: 8SRD□-15W (NO FAN)
- GEARBOX MODEL: 8WD□BL/BR/BRL



LEAD WIRE ASS Y 300mm  
MOTOR UL STYLE NO.3271 AWG NO.20  
T.G UL STYLE NO.1007 AWG NO.22

### KEY SPEC

GEARBOX	

### WEIGHT

PART	WEIGHT(Kg)	
MOTOR	1.66	
GEAR BOX	8GBK3BMH ~ 8GBK18BMH	0.56
	8GBK20BMH ~ 8GB40BMH	0.65
	8GBK50BMH ~ 8GBK360BMH	0.72
	8WD□BL/BR/BRL	0.68
	8XD10□□	0.45

# B AC Motors

S.C. Reversible Motor 15W (□80mm)

## Motor Images



## S.C. Reversible Motor 25W (□80mm)

# 25W

Speed Control  
Reversible Motor  
25W(□80mm)

### Motor 사양

Model 8SRDC*-25□: Gear Type Shaft 8SRDD*-25□: D-Cut Type Shaft	Output W	Voltage V	Frequency Hz	Poles	Duty	Speed Range r/min	Starting Torque		Permissible Torque				Capacitor μF / VAC
							kgfcm	N.m	1200r/min		90r/min		
Lead Wire Type									kgfcm	N.m	kgfcm	N.m	
8SRDG1(A)-25□	25	1∅110	60	4	30min.	90-1700	1.80	0.180	2.30	0.230	0.60	0.060	10.0 / 250
8SRDG2(D)-25□	25	1∅220	60	4	30min.	90-1700	1.80	0.180	2.30	0.230	0.60	0.060	2.5 / 450
8SRDGE-25□	25	1∅220	50	4	30min.	90-1400	1.60	0.160	2.10	0.210	0.55	0.055	2.5 / 450
		1∅240									0.65	0.065	

- 1) 모터 모델명 \* 자리에는 전압코드가, □ 안에는 부착되는 감속기의 모델 타입명이 들어갑니다.
- 2) 전압코드 A, D, E는 TP(Thermal Protector) 부착 사양입니다.
- 3) Gear Type Shaft는 감속기 부착용이며 D-Cut Type Shaft는 모터 단독 사용시의 출력축입니다.

### 감속기 부착 시 최대허용토크

Motor Model	Gearbox Model	회전 속도 r/min	전압 V	주파수 Hz	감속비	3	3.6	5	6	7.5	9	10	12.5	15	18	20	25	30	36
8SRDG*-25G	8GBK□ BMH	1200	110	60	kgfcm	5.6	6.7	9.3	11.2	14.0	16.8	18.6	23.3	27.9	33.5	33.6	42.0	50.4	60.4
					N.m	0.55	0.66	0.91	1.10	1.37	1.64	1.83	2.28	2.74	3.29	3.29	4.11	4.94	5.92
			220	60	kgfcm	5.6	6.7	9.3	11.2	14.0	16.8	18.6	23.3	27.9	33.5	33.6	42.0	50.4	60.4
		220/240	50	N.m	0.55	0.66	0.91	1.10	1.37	1.64	1.83	2.28	2.74	3.29	3.29	4.11	4.94	5.92	
		90	110	60	kgfcm	1.5	1.7	2.4	2.9	3.6	4.4	4.9	6.1	7.3	8.7	8.8	11.0	13.1	15.8
					N.m	0.14	0.17	0.24	0.29	0.36	0.43	0.48	0.60	0.71	0.86	0.86	1.07	1.29	1.55
220	60		kgfcm	1.5	1.7	2.4	2.9	3.6	4.4	4.9	6.1	7.3	8.7	8.8	11.0	13.1	15.8		
220/240	50	N.m	0.14	0.17	0.24	0.29	0.36	0.43	0.48	0.60	0.71	0.86	0.86	1.07	1.29	1.55			
					kgfcm	1.6	1.9	2.6	3.2	3.9	4.7	5.3	6.6	7.9	9.5	9.5	11.9	14.2	17.1
					N.m	0.15	0.19	0.26	0.31	0.39	0.46	0.52	0.64	0.77	0.93	0.93	1.16	1.40	1.67

Motor Model	Gearbox Model	회전 속도 r/min	전압 V	주파수 Hz	감속비	40	50	60	75	90	100	120	150	180	200	250	300	360	
8SRDG*-25G	8GBK□ BMH	1200	110	60	kgfcm	67.2	75.9	80.0	80.0	80.0	80.0	80.0	80.0	80.0	80.0	80.0	80.0	80.0	80.0
					N.m	6.58	7.44	7.84	7.84	7.84	7.84	7.84	7.84	7.84	7.84	7.84	7.84	7.84	7.84
			220	60	kgfcm	67.2	75.9	80.0	80.0	80.0	80.0	80.0	80.0	80.0	80.0	80.0	80.0	80.0	80.0
		220/240	50	N.m	6.58	7.44	7.84	7.84	7.84	7.84	7.84	7.84	7.84	7.84	7.84	7.84	7.84	7.84	7.84
		90	110	60	kgfcm	17.5	19.8	23.8	29.7	35.6	39.6	47.5	59.4	71.3	79.2	80.0	80.0	80.0	80.0
					N.m	1.72	1.94	2.33	2.91	3.49	3.88	4.66	5.82	6.99	7.76	7.84	7.84	7.84	
220	60		kgfcm	17.5	19.8	23.8	29.7	35.6	39.6	47.5	59.4	71.3	79.2	80.0	80.0	80.0			
220/240	50	N.m	1.72	1.94	2.33	2.91	3.49	3.88	4.66	5.82	6.99	7.76	7.84	7.84	7.84				
					kgfcm	19.0	21.5	25.7	32.2	38.6	42.9	51.5	64.4	77.2	80.0	80.0	80.0		
					N.m	1.86	2.10	2.52	3.15	3.78	4.20	5.05	6.31	7.57	7.84	7.84			

- 1) 모터 모델명 □ 안에는 전압코드가 들어갑니다.
- 2) 감속기 모델명 □ 안에는 감속비가 들어갑니다.
- 3) 위의 표에서 색칠된 범위의 감속비를 선택했을 때 감속기의 출력축은 모터의 출력축과 같은 방향으로 회전합니다.  
흰색 바탕 범위의 감속비에서는 감속기 출력축은 모터 출력축의 회전방향과 반대방향으로 회전합니다.
- 4) 회전속도(r/min)는 모터의 동기회전속도(50Hz:1500r/min, 60Hz:1800r/min)를 감속비로 나누어 계산합니다. 실제 회전속도는 부하의 크기에 따라 표시보다 2~20% 정도 느립니다.

# B AC Motors

## S.C. Reversible Motor 25W (□80mm)

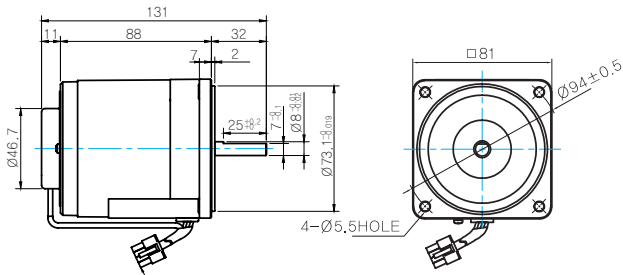
### 감속기 부착 시 최대허용토크

Motor Model	Gearbox Model	회전 속도 r/min	전압 V	주파수 Hz	감속비	10	12	15	18	25	30	36	50	60
8SRDG* 25W	8WD□BL/□BR/□BRL	1200	110	60	kgfcm N.m	18.9 1.85	22.1 2.16	26.6 2.60	30.6 3.00	40.3 3.94	45.5 4.46	53.0 5.19	69.0 6.76	75.9 7.44
			220	60	kgfcm N.m	19.1 1.87	22.9 2.24	28.6 2.81	34.4 3.37	47.7 4.68	57.3 5.61	68.7 6.73	95.5 9.35	81.6 8.00
			220/240	50	kgfcm N.m	18.9 1.85	22.1 2.16	26.6 2.60	30.6 3.00	40.3 3.94	45.5 4.46	53.0 5.19	69.0 6.76	75.9 7.44
		90	110	60	kgfcm N.m	4.9 0.48	5.8 0.56	6.9 0.68	8.0 0.78	10.5 1.03	11.9 1.16	13.8 1.35	18.0 1.76	19.8 1.94
			220	60	kgfcm N.m	4.9 0.48	5.8 0.56	6.9 0.68	8.0 0.78	10.5 1.03	11.9 1.16	13.8 1.35	18.0 1.76	19.8 1.94
			220/240	50	kgfcm N.m	5.3 0.52	6.2 0.61	7.5 0.74	8.7 0.85	11.4 1.11	12.9 1.26	15.0 1.47	19.5 1.91	21.5 2.10

### Dimensions

#### MOTOR ONLY

- MOTOR MODEL: 8SRDD□-25 (NO FAN)



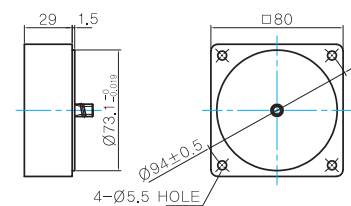
LEAD WIRE ASS Y 300mm  
MOTOR UL STYLE NO. 3271 AWG NO. 20  
T.G UL STYLE NO. 1007 AWG NO. 22

#### MOTOR OUTPUT SHAFT

MODEL	SPEC
D-CUT TYPE	

#### 중간감속기

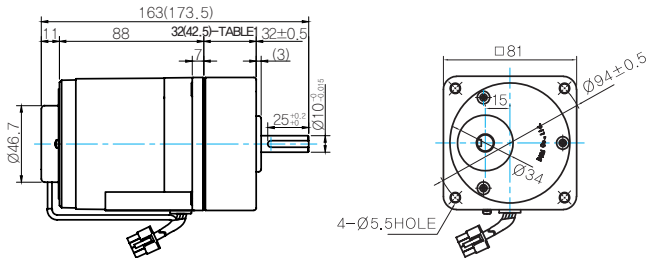
- MODEL: 8XD10□□



### GEARED MOTOR

#### G TYPE GEARBOX

- MOTOR MODEL: 8SRDG□-25G (NO FAN)
- GEARBOX MODEL: 8GBK□BMH



LEAD WIRE ASS Y 300mm  
MOTOR UL STYLE NO. 3271 AWG NO. 20  
T.G UL STYLE NO. 1007 AWG NO. 22

#### GEARBOX OUTPUT SHAFT

MODEL	SPEC
KEY TYPE	

#### KEY SPEC

GEARBOX	

#### 32(42.5)-Table1

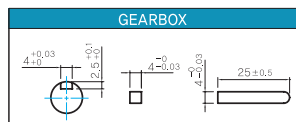
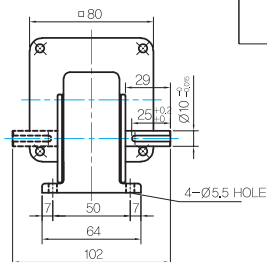
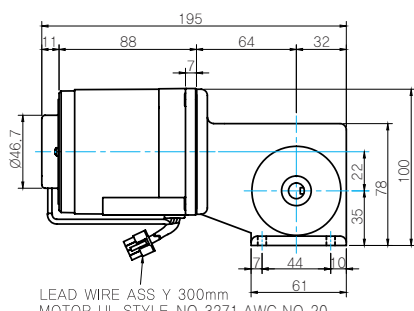
SIZE(mm)	GEAR RATIO
32	8GBK3BMH - 8GBK18BMH
42.5	8GBK20BMH - 8GBK360BMH

### W TYPE GEARBOX

● MOTOR MODEL:  
8SRDG□-25W (NO FAN)

● GEARBOX MODEL:  
8WD□BL/BR/BRL

● KEY SPEC



### WEIGHT

PART		WEIGHT(Kg)
GEAR BOX	MOTOR	1.66
	8GBK3BMH ~ 8GBK18BMH	0.56
	8GBK20BMH ~ 8GBK40BMH	0.65
	8GBK50BMH ~ 8GBK360BMH	0.72
	8WD□BL/BR/BRL	0.68
	8XD10□□	0.45

### Motor Images



# B AC Motors

## S.C. Reversible Motor 40W (□90mm)

# 40W

### Speed Control Reversible Motor 40W(□90mm)

### Motor 사양

Model 9SRDG*-40□: Gear Type Shaft 9SRDD*-40: D-Cut Type Shaft 9SRDK*-40: Key Type Shaft	Output W	Voltage V	Frequency Hz	Poles	Duty	Speed Range r/min	Starting Torque		Permissible Torque				Capacitor μF / VAC
									1200r/min		90r/min		
									kgfcm	N.m	kgfcm	N.m	
9SRDG1(A)-40□	40	1φ 110	60	4	30min.	90-1700	3.40	0.340	3.00	0.300	0.85	0.085	16.0 / 250
9SRDG2(D)-40□	40	1φ 220	60	4	30min.	90-1700	3.30	0.330	3.00	0.300	0.85	0.085	4.0 / 450
9SRDGE-40□	40	1φ 220	50	4	30min.	90-1400	3.00	0.300	2.60	0.260	0.80	0.080	4.0 / 450
		1φ 240					3.30	0.330	3.20	0.320	0.90	0.090	

- 1) 모터 모델명 \* 자리에는 전압코드가, □ 안에는 부착되는 감속기의 모델 타입명이 들어갑니다.
- 2) 전압코드 A, D, E는 TP(Thermal Protector) 부착 사양입니다.
- 3) Gear Type Shaft는 감속기 부착용이며 D-Cut & Key Type Shaft는 모터 단독 사용시의 출력축 입니다.

### 감속기 부착 시 최대허용토크

Motor Model	Gear box Model	회전 속도 r/min	전압 V	주파수 Hz	감속비	2	3	3.6	5	6	7.5	9	10	12.5	15	18	20	25	30	36	40	50	60	75	90	100	120	150	180	200			
9SRDG*-40G	9GBK □ BMH	1200	110	60	kgfcm	4.9	7.3	8.7	12.2	14.6	18.2	21.9	24.3	30.4	36.5	43.7	43.8	54.8	65.7	78.8	87.6	99.0	100.0	100.0	100.0	100.0	100.0	100.0	100.0	100.0	100.0		
					N.m	0.48	0.71	0.86	1.19	1.43	1.79	2.14	2.38	2.98	3.57	4.29	4.29	5.37	6.44	7.73	8.58	9.70	9.80	9.80	9.80	9.80	9.80	9.80	9.80	9.80	9.80	9.80	9.80
					kgfcm	4.9	7.3	8.7	12.2	14.6	18.2	21.9	24.3	30.4	36.5	43.7	43.8	54.8	65.7	78.8	87.6	99.0	100.0	100.0	100.0	100.0	100.0	100.0	100.0	100.0	100.0	100.0	100.0
		N.m	0.48	0.71	0.86	1.19	1.43	1.79	2.14	2.38	2.98	3.57	4.29	4.29	5.37	6.44	7.73	8.58	9.70	9.80	9.80	9.80	9.80	9.80	9.80	9.80	9.80	9.80	9.80	9.80	9.80		
		kgfcm	4.2	6.3	7.6	10.5	12.6	15.8	19.0	21.1	26.3	31.6	37.9	38.0	47.5	56.9	68.3	75.9	85.8	100.0	100.0	100.0	100.0	100.0	100.0	100.0	100.0	100.0	100.0	100.0	100.0		
		N.m	0.41	0.62	0.74	1.03	1.24	1.55	1.86	2.06	2.58	3.10	3.71	3.72	4.65	5.58	6.70	7.44	8.41	9.80	9.80	9.80	9.80	9.80	9.80	9.80	9.80	9.80	9.80	9.80	9.80		
	90	110	60	kgfcm	1.4	2.1	2.5	3.4	4.1	5.2	6.2	6.9	8.6	10.3	12.4	12.4	15.5	18.6	22.3	24.8	28.1	33.7	42.1	50.5	56.1	67.3	84.2	100.0	100.0	100.0	100.0		
				N.m	0.13	0.20	0.24	0.34	0.40	0.51	0.61	0.67	0.84	1.01	1.21	1.22	1.52	1.82	2.19	2.43	2.75	3.30	4.12	4.95	5.50	6.60	8.25	9.80	9.80	9.80	9.80		
				kgfcm	1.4	2.1	2.5	3.4	4.1	5.2	6.2	6.9	8.6	10.3	12.4	12.4	15.5	18.6	22.3	24.8	28.1	33.7	42.1	50.5	56.1	67.3	84.2	100.0	100.0	100.0	100.0	100.0	
		N.m	0.13	0.20	0.24	0.34	0.40	0.51	0.61	0.67	0.84	1.01	1.21	1.22	1.52	1.82	2.19	2.43	2.75	3.30	4.12	4.95	5.50	6.60	8.25	9.80	9.80	9.80	9.80	9.80			
		kgfcm	1.3	1.9	2.3	3.2	3.9	4.9	5.8	6.5	8.1	9.7	11.7	11.7	14.6	17.5	21.0	23.4	26.4	31.7	39.6	47.5	52.8	63.4	79.2	95.0	100.0	100.0	100.0	100.0	100.0		
		N.m	0.13	0.19	0.23	0.32	0.38	0.48	0.57	0.64	0.79	0.95	1.14	1.14	1.43	1.72	2.06	2.29	2.59	3.10	3.88	4.66	5.17	6.21	7.76	9.31	9.80	9.80	9.80	9.80	9.80		

Motor Model	Gearbox Model	회전 속도 r/min	전압 V	주파수 Hz	감속비	10	12	15	18	25	30	36	50	60
9SRDG*-40W	9WD□BL/□BR/□BRL	1200	110	60	kgfcm	24.6	28.8	34.7	40.0	52.5	59.4	69.1	90.0	99.0
					N.m	2.41	2.82	3.40	3.92	5.15	5.82	6.77	8.82	9.70
					kgfcm	24.9	29.9	37.4	44.8	62.3	74.7	89.6	124.5	122.4
		N.m	2.44	2.93	3.66	4.39	6.10	7.32	8.78	12.20	12.00			
		kgfcm	26.2	30.7	37.0	42.6	56.0	63.4	73.7	96.0	105.6			
		N.m	2.57	3.01	3.62	4.18	5.49	6.21	7.23	9.41	10.35			
	90	110	60	kgfcm	7.0	8.2	9.8	11.3	14.9	16.8	19.6	25.5	28.1	
				N.m	0.68	0.80	0.96	1.11	1.46	1.65	1.92	2.50	2.75	
				kgfcm	7.0	8.2	9.8	11.3	14.9	16.8	19.6	25.5	28.1	
		N.m	0.68	0.80	0.96	1.11	1.46	1.65	1.92	2.50	2.75			
		kgfcm	7.4	8.6	10.4	12.0	15.8	17.8	20.7	27.0	29.7			
		N.m	0.72	0.85	1.02	1.17	1.54	1.75	2.03	2.65	2.91			

- 1) 모터 모델명 □ 안에는 전압코드가 들어갑니다.
- 2) 감속기 모델명 □ 안에는 감속비가 들어갑니다.
- 3) 위의 표에서 색칠된 범위의 감속비를 선택했을 때 감속기의 출력축은 모터의 출력축과 같은 방향으로 회전합니다. 흰색 바탕 범위의 감속비에서는 감속기 출력축은 모터 출력축의 회전방향과 반대방향으로 회전합니다.
- 4) 회전속도(r/min)는 모터의 동기회전속도(50Hz:1500r/min, 60Hz:1800r/min)를 감속비로 나누어 계산합니다. 실제 회전속도는 부하의 크기에 따라 표시보다 2~20% 정도 느립니다.



Motor Model	Gearbox Model	회전속도 r/min	전압 V	주파수 Hz	감속비	2	3	3.6	5	6	7.5	9	10	12.5	15	18	20	25	30
9SRDG* -40P	9PBK□BH 9PFK□BH	1200	110	60	kgfcm	4.9	7.3	8.7	12.2	14.6	18.2	21.9	24.3	27.4	32.9	39.4	43.8	49.5	59.4
					N.m	0.48	0.71	0.86	1.19	1.43	1.79	2.14	2.38	2.68	3.22	3.86	4.29	4.85	5.82
			220	60	kgfcm	4.9	7.3	8.7	12.2	14.6	18.2	21.9	24.3	27.4	32.9	39.4	43.8	49.5	59.4
		N.m	0.48	0.71	0.86	1.19	1.43	1.79	2.14	2.38	2.68	3.22	3.86	4.29	4.85	5.82			
		220/ 240	50	kgfcm	4.2	6.3	7.6	10.5	12.6	15.8	19.0	21.1	23.7	28.5	34.2	38.0	42.9	51.5	
		N.m	0.41	0.62	0.74	1.03	1.24	1.55	1.86	2.06	2.33	2.79	3.35	3.72	4.20	5.05			
90	110	60	kgfcm	1.4	2.1	2.5	3.4	4.1	5.2	6.2	6.9	7.8	9.3	11.2	12.4	14.0	16.8		
			N.m	0.13	0.20	0.24	0.34	0.40	0.51	0.61	0.67	0.76	0.91	1.09	1.22	1.37	1.65		
	220	60	kgfcm	1.4	2.1	2.5	3.4	4.1	5.2	6.2	6.9	7.8	9.3	11.2	12.4	14.0	16.8		
N.m	0.13	0.20	0.24	0.34	0.40	0.51	0.61	0.67	0.76	0.91	1.09	1.22	1.37	1.65					
220/ 240	50	kgfcm	1.3	1.9	2.3	3.2	3.9	4.9	5.8	6.5	7.3	8.8	10.5	11.7	13.2	15.8			
N.m	0.13	0.19	0.23	0.32	0.38	0.48	0.57	0.64	0.72	0.86	1.03	1.14	1.29	1.55					

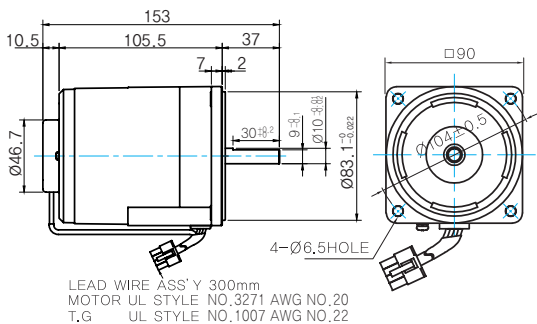
  

Motor Model	Gearbox Model	회전속도 r/min	전압 V	주파수 Hz	감속비	36	40	50	60	75	90	100	120	150	180	200
9SRDG* -40P	9PBK□BH 9PFK□BH	1200	110	60	kgfcm	71.3	79.2	99.0	118.8	132.8	159.3	177.0	200.0	200.0	200.0	200.0
					N.m	6.99	7.76	9.70	11.64	13.01	15.61	17.35	19.60	19.60	19.60	19.60
			220	60	kgfcm	71.3	79.2	99.0	118.8	132.8	159.3	177.0	200.0	200.0	200.0	200.0
		N.m	6.99	7.76	9.70	11.64	13.01	15.61	17.35	19.60	19.60	19.60	19.60			
		220/ 240	50	kgfcm	61.8	68.6	85.8	103.0	115.1	138.1	153.4	184.1	200.0	200.0	200.0	
		N.m	6.05	6.73	8.41	10.09	11.27	13.53	15.03	18.04	19.60	19.60	19.60			
90	110	60	kgfcm	20.2	22.4	28.1	33.7	37.6	45.1	50.2	60.2	75.2	90.3	100.3		
			N.m	1.98	2.20	2.75	3.30	3.69	4.42	4.91	5.90	7.37	8.85	9.83		
	220	60	kgfcm	20.2	22.4	28.1	33.7	37.6	45.1	50.2	60.2	75.2	90.3	100.3		
N.m	1.98	2.20	2.75	3.30	3.69	4.42	4.91	5.90	7.37	8.85	9.83					
220/ 240	50	kgfcm	19.0	21.1	26.4	31.7	35.4	42.5	47.2	56.6	70.8	85.0	94.4			
N.m	1.86	2.07	2.59	3.10	3.47	4.16	4.63	5.55	6.94	8.33	9.25					

## Dimensions

### MOTOR ONLY

- MOTOR MODEL: 9SRDD□-40 (NO FAN)



### MOTOR OUTPUT SHAFT

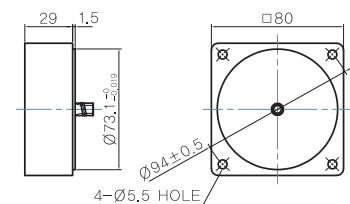
MODEL	SPEC
D-CUT TYPE	
KEY TYPE	

### KEY SPEC

GEARBOX

### 중간감속기

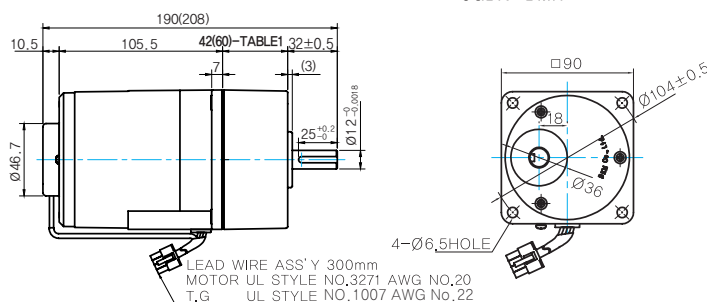
- MODEL: 9XD10□□



## GEARED MOTOR

### G TYPE GEARBOX

- MOTOR MODEL: 9SRDG□-40G (NO FAN)
- GEARBOX MODEL: 9GBK□BMH



### GEARBOX OUTPUT SHAFT

MODEL	SPEC
KEY TYPE	

### KEY SPEC

GEARBOX

### 42(60)-Table1

SIZE(mm)	GEAR RATIO
42	9GBK2BMH - 9GBK18BMH
60	9GBK20BMH - 9GBK200BMH

# B AC Motors

## S.C. Reversible Motor 40W (□90mm)

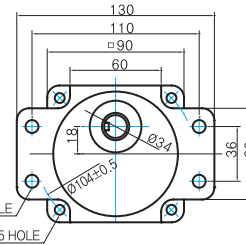
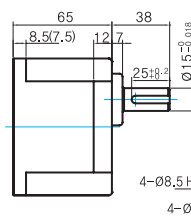
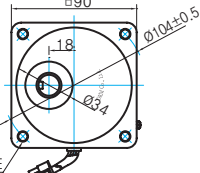
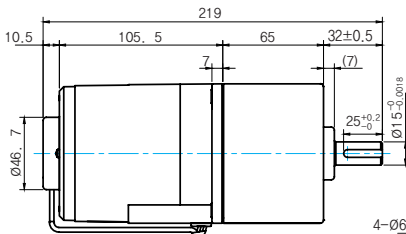
### P TYPE GEARBOX

● MOTOR MODEL:  
9SRDG□-40G (NO FAN)

● GEARBOX MODEL:  
9PBK□BH

● GEARBOX MODEL:  
9PFK□BH

● GEARBOX OUTPUT SHAFT



LEAD WIRE ASS'Y 300mm  
MOTOR UL STYLE NO.3271 AWG NO.20  
T,G UL STYLE NO.1007 AWG No.22

MODEL	SPEC
KEY TYPE	
9PBK□BH 9PFK□BH	

● KEY SPEC

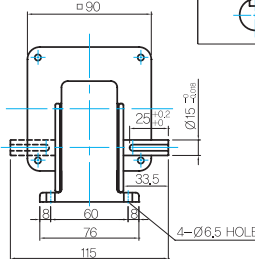
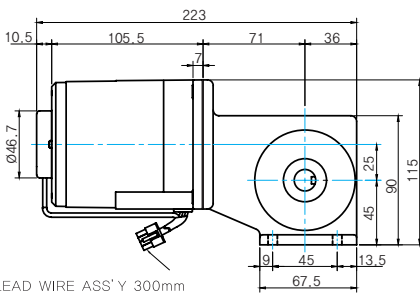
GEARBOX

### W TYPE GEARBOX

● MOTOR MODEL:  
9SRDG□-40W (NO FAN)

● GEARBOX MODEL:  
9WD□BL/BR/BRL

● KEY SPEC



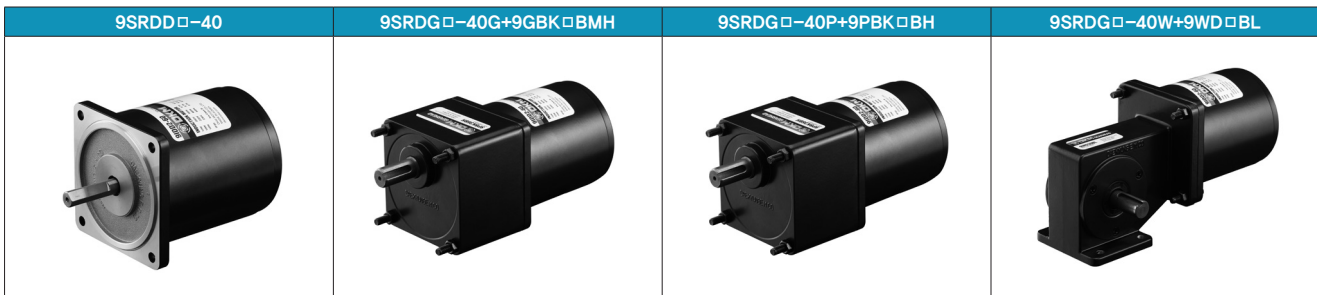
LEAD WIRE ASS'Y 300mm  
MOTOR UL STYLE NO.3271 AWG NO.20  
T,G UL STYLE NO.1007 AWG No.22

GEARBOX

### WEIGHT

PART	WEIGHT(kg)	
MOTOR	2.55	
GEAR BOX	9GBK2BMH ~ 9GBK18BMH	0.78
	9GBK20BMH ~ 9GBK40BMH	1.1
	9GBK50BMH ~ 9GBK200BMH	1.2
	9PB(F)K2BH ~ 9PB(F)K10BH	1.28
	9PB(F)K12.5BH ~ 9PB(F)K20BH	1.3
	9PB(F)K25BH ~ 9PB(F)K60BH	1.45
	9PB(F)K75BH ~ 9PB(F)K200BH	1.47
	9WD□BL/BR/BRL	1.0
	9XD10□□	0.6

## Motor Images



## S.C. Reversible Motor 60W (□90mm)

# 60W

Speed Control  
Reversible Motor  
60W(□90mm)

### Motor 사양

Model 9SRDG*-60F2□: Gear Type Shaft 9SRDD*-60F2: D-Cut Type Shaft 9SRDK*-60F2: Key Type Shaft	Output W	Voltage V	Frequency Hz	Poles	Duty	Speed Range r/min	Starting Torque kgfcm N.m		Permissible Torque				Capacitor μF / VAC
									1200r/min		90r/min		
									kgfcm	N.m	kgfcm	N.m	
9SRDG1(A)-60F2□	60	1φ110	60	4	30min.	90-1700	3.20	0.320	6.10	0.610	2.80	0.280	20.0 / 250
9SRDG2(D)-60F2□	60	1φ220	60	4	30min.	90-1700	3.80	0.380	6.50	0.650	3.00	0.300	6.0 / 450
9SRDGE-60F2□	60	1φ220	50	4	30min.	90-1400	5.20	0.520	5.20	0.520	1.00	0.100	6.0 / 450
		1φ240					5.80	0.580	5.80	0.580	1.00	0.100	

- 1) 모터 모델명 \* 자리에는 전압코드, □ 안에는 부착되는 감속기의 모델 타입명이 들어갑니다.
- 2) 전압코드 A, D, E는 TP(Thermal Protector) 부착 사양입니다.
- 3) Gear Type Shaft는 감속기 부착용이며 D-Cut & Key Type Shaft는 모터 단독 사용시의 출력축입니다.

### 감속기 부착 시 최대허용토크

Motor Model	Gearbox Model	회전 속도 r/min	전압 V	주파수 Hz	감속비	2	3	3.6	5	6	7.5	9	10	12.5	15	18	20
9SRDG*-60F2P	9PBK□BH 9PFK□BH	1200	110	60	kgfcm	8.7	13.1	15.7	21.9	26.2	32.8	39.4	43.7	49.3	59.1	71.0	78.8
					N.m	0.86	1.29	1.54	2.14	2.57	3.21	3.86	4.29	4.83	5.79	6.95	7.73
					kgfcm	8.6	12.9	15.5	21.5	25.8	32.2	38.6	42.9	48.4	58.0	69.6	77.4
		90	220/240	50	kgfcm	8.4	12.6	15.2	21.1	25.3	31.6	37.9	42.1	47.5	56.9	68.3	75.9
					N.m	0.83	1.24	1.49	2.06	2.48	3.10	3.71	4.13	4.65	5.58	6.70	7.44
					kgfcm	4.5	6.8	8.2	11.3	13.6	17.0	20.4	22.7	25.6	30.7	36.8	40.9
90	220/240	60	kgfcm	4.4	6.6	7.9	10.9	13.1	16.4	19.7	21.9	24.6	29.6	35.5	39.4		
			N.m	0.43	0.64	0.77	1.07	1.29	1.61	1.93	2.14	2.41	2.90	3.48	3.86		
			kgfcm	4.4	6.6	7.9	10.9	13.1	16.4	19.7	21.9	24.6	29.6	35.5	39.4		
N.m	0.43	0.64	0.77	1.07	1.29	1.61	1.93	2.14	2.41	2.90	3.48	3.86					

Motor Model	Gearbox Model	회전 속도 r/min	전압 V	주파수 Hz	감속비	25	30	36	40	50	60	75	90	100	120	150	180	200	
9SRDG*-60F2P	9PBK□BH 9PFK□BH	1200	110	60	kgfcm	89.1	106.9	128.3	142.6	178.2	200.0	200.0	200.0	200.0	200.0	200.0	200.0	200.0	
					N.m	8.73	10.48	12.57	13.97	17.46	19.60	19.60	19.60	19.60	19.60	19.60	19.60	19.60	19.60
					kgfcm	87.5	104.9	125.9	139.9	174.9	200.0	200.0	200.0	200.0	200.0	200.0	200.0	200.0	200.0
		90	220/240	50	kgfcm	85.8	103.0	123.6	137.3	171.6	200.0	200.0	200.0	200.0	200.0	200.0	200.0	200.0	200.0
					N.m	8.41	10.09	12.11	13.45	16.82	19.60	19.60	19.60	19.60	19.60	19.60	19.60	19.60	
					kgfcm	46.2	55.4	66.5	73.9	92.4	110.9	123.9	148.7	165.2	198.2	200.0	200.0	200.0	
90	220/240	60	kgfcm	44.6	53.5	64.2	71.3	89.1	106.9	119.5	143.4	159.3	191.2	200.0	200.0	200.0			
			N.m	4.37	5.24	6.29	6.99	8.73	10.48	11.71	14.05	15.61	18.73	19.60	19.60				
			kgfcm	44.6	53.5	64.2	71.3	89.1	106.9	119.5	143.4	159.3	191.2	200.0	200.0	200.0			
N.m	4.37	5.24	6.29	6.99	8.73	10.48	11.71	14.05	15.61	18.73	19.60	19.60	19.60						

- 1) 모터 모델명 □ 안에는 전압코드가 들어갑니다.
- 2) 감속기 모델명 □ 안에는 감속비가 들어갑니다.
- 3) 위의 표에서 색칠된 범위의 감속비를 선택했을 때 감속기의 출력축은 모터의 출력축과 같은 방향으로 회전합니다.  
흰색 바탕 범위의 감속비에서는 감속기 출력축은 모터 출력축의 회전방향과 반대방향으로 회전합니다.
- 4) 회전속도(r/min)는 모터의 동기회전속도(50Hz:1500r/min, 60Hz:1800r/min)를 감속비로 나누어 계산합니다. 실제 회전속도는 부하의 크기에 따라 표시보다 2~20% 정도 느립니다.

### 감속기 부착 시 최대허용토크

Motor Model	Gear box Model	회전 속도 r/min	전압 V	주파수 Hz	감속비	3	3.6	5	6	7.5	9	10	12.5	15	18	20	25
9SRDG*~60F2H	9HBK□BH	1200	110	60	kgfcm	13.1	15.7	21.9	26.2	32.8	39.4	43.7	49.3	59.1	71.0	78.8	89.1
					N.m	1.29	1.54	2.14	2.57	3.21	3.86	4.29	4.83	5.79	6.95	7.73	8.73
			220	60	kgfcm	12.9	15.5	21.5	25.8	32.2	38.6	42.9	48.4	58.0	69.6	77.4	87.5
	220/240	50	kgfcm	12.6	15.2	21.1	25.3	31.6	37.9	42.1	47.5	56.9	68.3	75.9	85.8		
	9HFK□BH	90	110	60	kgfcm	6.8	8.2	11.3	13.6	17.0	20.4	22.7	25.6	30.7	36.8	40.9	46.2
					N.m	0.67	0.80	1.11	1.33	1.67	2.00	2.22	2.50	3.00	3.61	4.01	4.53
220			60	kgfcm	6.6	7.9	10.9	13.1	16.4	19.7	21.9	24.6	29.6	35.5	39.4	44.6	
220/240	50	kgfcm	6.6	7.9	10.9	13.1	16.4	19.7	21.9	24.6	29.6	35.5	39.4	44.6			
					N.m	0.64	0.77	1.07	1.29	1.61	1.93	2.14	2.41	2.90	3.48	3.86	4.37

Motor Model	Gear box Model	회전 속도 r/min	전압 V	주파수 Hz	감속비	30	36	40	50	60	75	90	100	120	150	190	200			
9SRDG*~60F2H	9HBK□BH	1200	110	60	kgfcm	106.9	128.3	142.6	178.2	213.8	239.0	286.7	300.0	300.0	300.0	300.0	300.0	300.0		
					N.m	10.48	12.57	13.97	17.46	20.96	23.42	28.10	29.40	29.40	29.40	29.40	29.40	29.40	29.40	
			220	60	kgfcm	104.9	125.9	139.9	174.9	209.9	234.5	281.4	300.0	300.0	300.0	300.0	300.0	300.0	300.0	300.0
					N.m	10.28	12.34	13.71	17.14	20.57	22.98	27.58	29.40	29.40	29.40	29.40	29.40	29.40	29.40	29.40
			220/240	50	kgfcm	103.0	123.6	137.3	171.6	205.9	230.1	276.1	300.0	300.0	300.0	300.0	300.0	300.0	300.0	300.0
					N.m	10.09	12.11	13.45	16.82	20.18	22.55	27.06	29.40	29.40	29.40	29.40	29.40	29.40	29.40	29.40
	9HFK□BH	90	110	60	kgfcm	55.4	66.5	73.9	92.4	110.9	123.9	148.7	165.2	198.2	247.8	297.4	300.0			
					N.m	5.43	6.52	7.24	9.06	10.87	12.14	14.57	16.19	19.43	24.28	29.14	29.40			
			220	60	kgfcm	53.5	64.2	71.3	89.1	106.9	119.5	143.4	159.3	191.2	239.0	286.7	300.0			
					N.m	5.24	6.29	6.99	8.73	10.48	11.71	14.05	15.61	18.73	23.42	28.10	29.40			
			220/240	50	kgfcm	53.5	64.2	71.3	89.1	106.9	119.5	143.4	159.3	191.2	239.0	286.7	300.0			
					N.m	5.24	6.29	6.99	8.73	10.48	11.71	14.05	15.61	18.73	23.42	28.10	29.40			

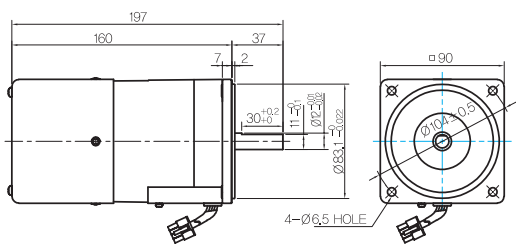
Motor Model	Gearbox Model	회전속도 r/min	전압 V	주파수 Hz	감속비	10	12	15	18	25	30	36	50	60
9SRDG*~60F2W	9WD□BL/□BR/□BRL	1200	110	60	kgfcm	44.3	51.8	62.4	71.9	94.5	106.9	124.4	142.9	122.4
					N.m	4.34	5.08	6.11	7.05	9.26	10.48	12.19	14.00	12.00
			220	60	kgfcm	43.5	50.9	61.2	70.6	92.8	104.9	122.1	142.9	122.4
		220/240	50	kgfcm	42.6	4.99	6.00	6.92	9.09	10.28	11.97	14.00	12.00	
		90	110	60	kgfcm	47.6	55.7	67.0	77.3	101.5	114.8	133.6	142.9	122.4
					N.m	4.66	5.46	6.57	7.57	9.95	11.25	13.10	14.00	12.00
			220	60	kgfcm	23.0	26.9	32.3	37.3	49.0	55.4	64.5	84.0	92.4
		220/240	110	60	kgfcm	2.25	2.63	3.17	3.66	4.80	5.43	6.32	8.23	9.06
					N.m	2.21	2.54	3.06	3.52	4.63	5.24	6.10	7.94	8.73
220	60		kgfcm	22.1	25.9	31.2	36.0	47.3	53.5	62.2	81.0	89.1		
220/240	110	60	kgfcm	2.17	2.54	3.06	3.52	4.63	5.24	6.10	7.94	8.73		
			N.m	2.17	2.54	3.06	3.52	4.63	5.24	6.10	7.94	8.73		
	220	60	kgfcm	23.8	27.8	33.5	38.6	50.8	57.4	66.8	87.0	95.7		
220/240	50	kgfcm	2.33	2.73	3.28	3.79	4.97	5.63	6.55	8.53	9.38			
					N.m	2.33	2.73	3.28	3.79	4.97	5.63	6.55	8.53	9.38

Motor Model	Gearbox Model	회전속도 r/min	전압 V	주파수 Hz	감속비	7.5	10	15	20	25	30	40	50	60	80
9SRDG*~60F2WH	9WHD□-030	1200	110	60	kgfcm	27.2	35.0	49.2	62.2	71.3	82.9	102.0	116.6	129.6	132.7
					N.m	2.67	3.43	4.83	6.10	6.99	8.13	9.99	11.43	12.70	13.00
			220	60	kgfcm	26.7	34.3	48.3	61.1	70.0	81.4	100.1	114.5	127.2	132.7
		220/240	50	kgfcm	2.62	3.37	4.74	5.98	6.86	7.98	9.81	11.22	12.47	13.00	
		90	110	60	kgfcm	29.2	37.6	52.9	66.8	76.6	89.1	109.5	125.3	139.2	132.7
					N.m	2.86	3.68	5.18	6.55	7.50	8.73	10.73	12.28	13.64	13.00
			220	60	kgfcm	17.6	22.7	31.9	40.3	46.2	53.8	66.1	75.6	84.0	98.6
		220/240	110	60	kgfcm	1.73	2.22	3.13	3.95	4.53	5.27	6.48	7.41	8.23	9.66
					N.m	1.67	2.14	3.02	3.81	4.37	5.08	6.24	7.14	7.94	9.31
220	60		kgfcm	17.0	21.9	30.8	38.9	44.6	51.8	63.7	72.9	81.0	95.0		
220/240	110	60	kgfcm	1.67	2.14	3.02	3.81	4.37	5.08	6.24	7.14	7.94	9.31		
			N.m	1.67	2.14	3.02	3.81	4.37	5.08	6.24	7.14	7.94	9.31		
	220	60	kgfcm	18.3	23.5	33.1	41.8	47.9	55.7	68.4	78.3	87.0	102.1		
220/240	50	kgfcm	1.79	2.30	3.24	4.09	4.69	5.46	6.71	7.67	8.53	10.00			
					N.m	1.79	2.30	3.24	4.09	4.69	5.46	6.71	7.67	8.53	10.00

## Dimensions

### MOTOR ONLY

- MOTOR MODEL:  
9SRDD□-60F2 (POWERFUL FAN)

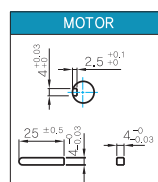


LEAD WIRE ASS'Y 300mm  
MOTOR UL STYLE NO.3271 AWG NO.20  
T,G UL STYLE NO.1007 AWG No.22

### MOTOR OUTPUT SHAFT

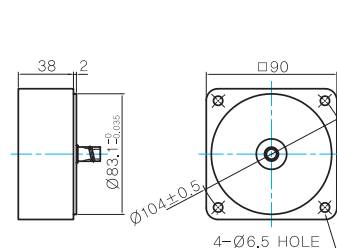
MODEL	SPEC
D-CUT TYPE	37 30±0.2 Ø104±0.5
KEY TYPE	37 25±0.2 Ø104±0.5
9SRDD□-60F2	
9SRDK□-60F2	

### KEY SPEC



### 중간감속기

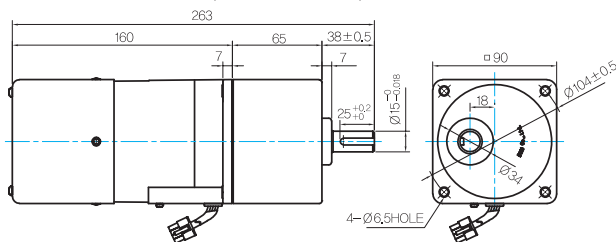
- MODEL: 9XD10□□



### GEARED MOTOR

#### P TYPE GEARBOX

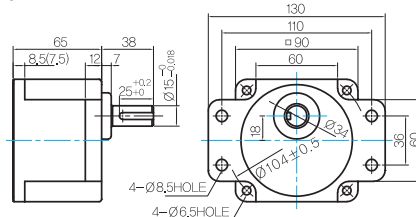
- MOTOR MODEL:  
9SRDG□-60F2P (POWERFUL FAN)



LEAD WIRE ASS'Y 300mm  
MOTOR UL STYLE NO.3271 AWG NO.20  
T,G UL STYLE NO.1007 AWG No.22

- GEARBOX MODEL:  
9PBK□BH

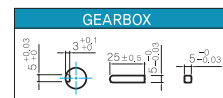
- GEARBOX MODEL:  
9PFK□BH



#### GEARBOX OUTPUT SHAFT

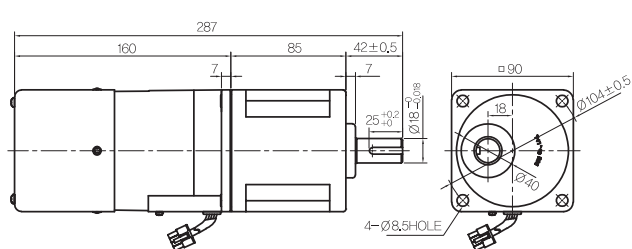
MODEL	SPEC
KEY TYPE	38 25±0.5 Ø104±0.5 Ø12±0.08
9PBK□BH	
9PFK□BH	

#### KEY SPEC



#### H TYPE GEARBOX

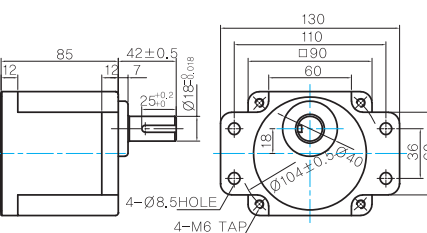
- MOTOR MODEL:  
9SRDG□-60F2H (POWERFUL FAN)



LEAD WIRE ASS'Y 300mm  
MOTOR UL STYLE NO.3271 AWG NO.20  
T,G UL STYLE NO.1007 AWG No.22

- GEARBOX MODEL:  
9HBK□BH

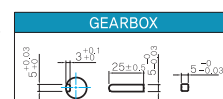
- GEARBOX MODEL:  
9HFK□BH



#### GEARBOX OUTPUT SHAFT

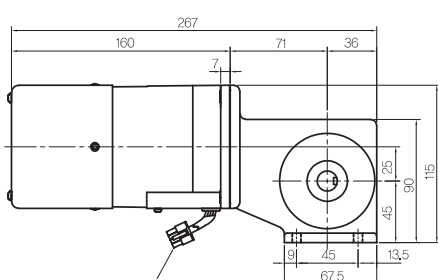
MODEL	SPEC
KEY TYPE	42 25±0.5 Ø104±0.5 Ø15±0.08
9HBK□BH	
9HFK□BH	

#### KEY SPEC



#### W TYPE GEARBOX

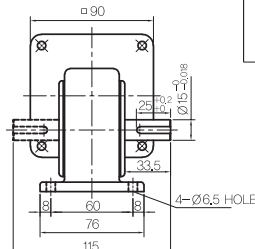
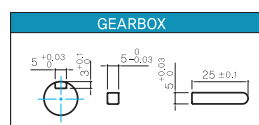
- MOTOR MODEL:  
9SRDG□-60F2W (POWERFUL FAN)



LEAD WIRE ASS'Y 300mm  
MOTOR UL STYLE NO.3271 AWG NO.20  
T,G UL STYLE NO.1007 AWG No.22

- GEARBOX MODEL:  
9WD□BL/BR/BRL

#### KEY SPEC



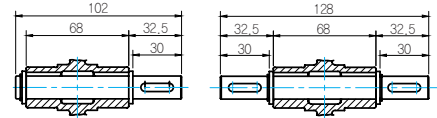
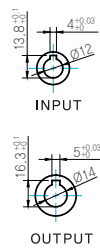
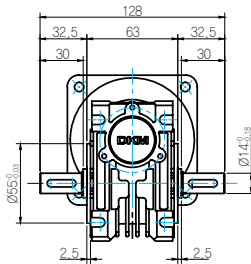
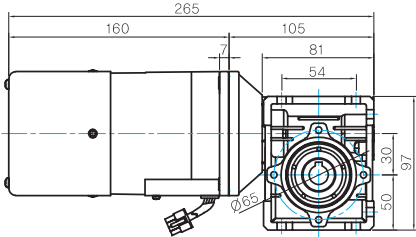
### Dimensions

#### WH TYPE GEARBOX

● MOTOR MODEL:  
9SRD□-60F2WH (POWERFUL FAN)

● GEARBOX MODEL:  
9WHD□-030

● SHAFT



한방향

양방향

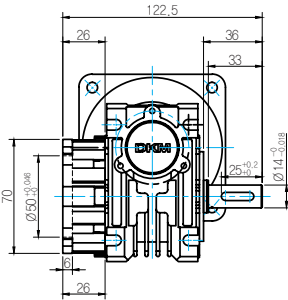
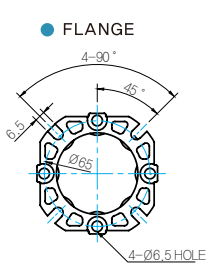
LEAD WIRE ASS'Y 300mm  
MOTOR UL STYLE NO.3271 AWG NO.20  
T.G UL STYLE NO.1007 AWG No.22

#### WEIGHT

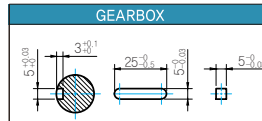
PART	WEIGHT(Kg)
MOTOR	3.15
9PB(F)K2BH - 9PB(F)K10BH	1.28
9PB(F)K12.5BH - 9PB(F)K20BH	1.3
9PB(F)K25BH - 9PB(F)K60BH	1.45
9PB(F)K75BH - 9PB(F)K200BH	1.47
9HB(F)K3BH - 9HB(F)K10BH	1.62
9HB(F)K12.5BH - 9HB(F)K20BH	1.68
9HB(F)K25BH - 9HB(F)K60BH	1.73
9HB(F)K75BH - 9HB(F)K200BH	1.78
9WD□BL/BR/BRL	1.0
9WHD□-030	1.2
9XD10□□	0.6

\* 출력 FLANGE와 SHAFT는 별매입니다.

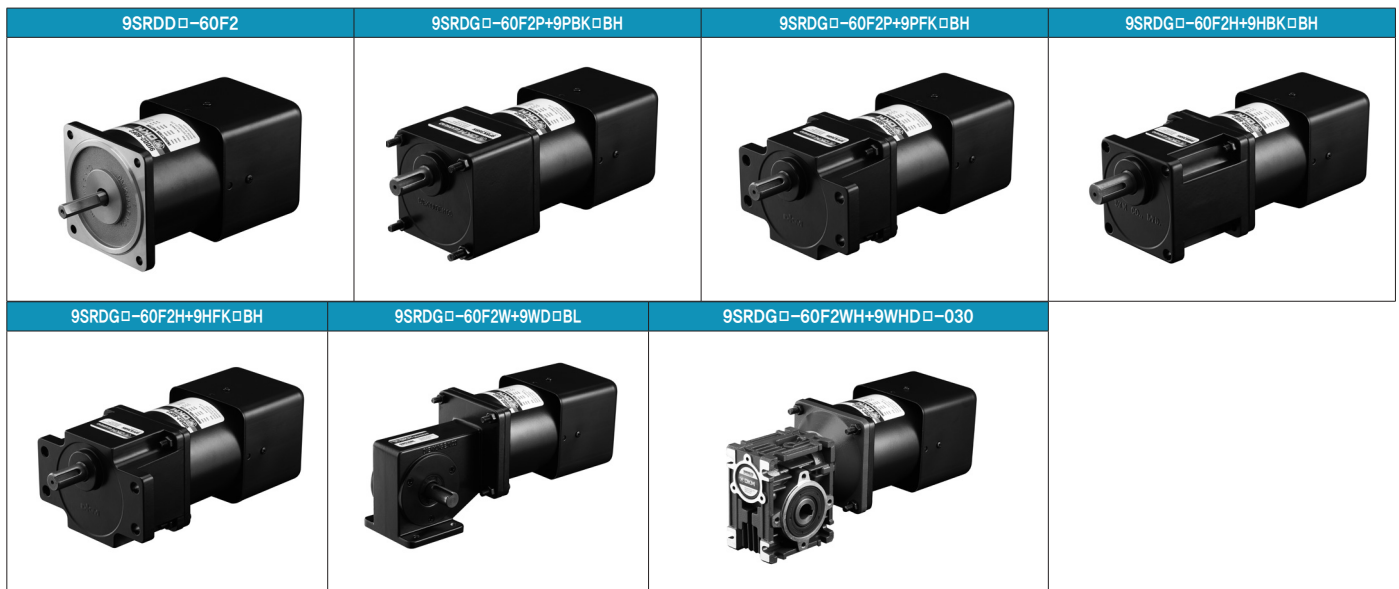
● FLANGE



● KEY SPEC



### Motor Images



## S.C. Reversible Motor 90W (□90mm)

# 90W

Speed Control  
Reversible Motor  
90W(□90mm)

### Motor 사양

Model 9SRDG*~90F2□: Gear Type Shaft 9SRDD*~90F2: D-Cut Type Shaft 9SRDK*~60F2: Key Type Shaft	Output W	Voltage V	Frequency Hz	Poles	Duty	Speed Range r/min	Starting Torque kgfcm N.m		Permissible Torque				Capacitor μF / VAC
									1200r/min		90r/min		
									kgfcm	N.m	kgfcm	N.m	
Lead Wire Type													
9SRDG1(A)-90F2□	90	1φ110	60	4	30min.	90-1700	6.00	0.600	7.30	0.730	3.00	0.300	25.0 / 250
9SRDG2(D)-90F2□	90	1φ220	60	4	30min.	90-1700	6.00	0.600	7.30	0.730	3.00	0.300	6.5 / 450
9SRDGE-90F2□	90	1φ220	50	4	30min.	90-1400	5.50	0.550	7.00	0.700	2.80	0.280	6.5 / 450
		1φ240					6.00	0.600	7.50	0.750	3.30	0.330	

- 1) 모터 모델명 \* 자리에는 전압코드가, □ 안에는 부착되는 감속기의 모델 타입명이 들어갑니다.
- 2) 전압코드 A, D, E는 TP(Thermal Protector) 부착 사양입니다.
- 3) Gear Type Shaft는 감속기 부착용이며 D-Cut & Key Type Shaft는 모터 단독 사용시의 출력축 입니다.

### 감속기 부착 시 최대허용토크

Motor Model	Gearbox Model	회전 속도 r/min	전압 V	주파수 Hz	감속비	2	3	3.6	5	6	7.5	9	10	12.5	15	18	20
9SRDG*~90F2P	9PBK□BH 9PFK□BH	1200	110	60	kgfcm	11.8	17.7	21.3	29.6	35.5	44.3	53.2	59.1	66.6	79.9	95.9	106.6
					N.m	1.16	1.74	2.09	2.90	3.48	4.35	5.22	5.79	6.53	7.83	9.40	10.44
					kgfcm	11.8	17.7	21.3	29.6	35.5	44.3	53.2	59.1	66.6	79.9	95.9	106.6
		90	110	60	kgfcm	4.9	7.3	8.7	12.2	14.6	18.2	21.9	24.3	27.4	32.9	39.4	43.8
					N.m	0.48	0.71	0.86	1.19	1.43	1.79	2.14	2.38	2.68	3.22	3.86	4.29
					kgfcm	4.9	7.3	8.7	12.2	14.6	18.2	21.9	24.3	27.4	32.9	39.4	43.8
220/240	50	kgfcm	4.5	6.8	8.2	11.3	13.6	17.0	20.4	22.7	25.6	30.7	36.8	40.9			
		N.m	0.44	0.67	0.80	1.11	1.33	1.67	2.00	2.22	2.50	3.00	3.61	4.01			

Motor Model	Gearbox Model	회전 속도 r/min	전압 V	주파수 Hz	감속비	25	30	36	40	50	60	75	90	100	120	150	180	200				
9SRDG*~90F2P	9PBK□BH 9PFK□BH	1200	110	60	kgfcm	120.5	144.5	173.4	192.7	200.0	200.0	200.0	200.0	200.0	200.0	200.0	200.0	200.0	200.0			
					N.m	11.80	14.16	17.00	18.89	19.60	19.60	19.60	19.60	19.60	19.60	19.60	19.60	19.60	19.60	19.60	19.60	
					kgfcm	120.5	144.5	173.4	192.7	200.0	200.0	200.0	200.0	200.0	200.0	200.0	200.0	200.0	200.0	200.0	200.0	200.0
					N.m	11.80	14.16	17.00	18.89	19.60	19.60	19.60	19.60	19.60	19.60	19.60	19.60	19.60	19.60	19.60	19.60	19.60
					kgfcm	115.5	138.6	166.3	184.8	200.0	200.0	200.0	200.0	200.0	200.0	200.0	200.0	200.0	200.0	200.0	200.0	200.0
					N.m	11.32	13.58	16.30	18.11	19.60	19.60	19.60	19.60	19.60	19.60	19.60	19.60	19.60	19.60	19.60	19.60	19.60
		90	110	60	kgfcm	49.5	59.4	71.3	79.2	99.0	118.8	132.8	159.3	177.0	200.0	200.0	200.0	200.0	200.0	200.0	200.0	
					N.m	4.85	5.82	6.99	7.76	9.70	11.64	13.01	15.61	17.35	19.60	19.60	19.60	19.60	19.60	19.60	19.60	
					kgfcm	49.5	59.4	71.3	79.2	99.0	118.8	132.8	159.3	177.0	200.0	200.0	200.0	200.0	200.0	200.0	200.0	
					N.m	4.85	5.82	6.99	7.76	9.70	11.64	13.01	15.61	17.35	19.60	19.60	19.60	19.60	19.60	19.60	19.60	
					kgfcm	46.2	55.4	66.5	73.9	92.4	110.9	123.9	148.7	165.2	198.2	200.0	200.0	200.0	200.0	200.0	200.0	
					N.m	4.53	5.43	6.52	7.24	9.06	10.87	12.14	14.57	16.19	19.43	19.60	19.60	19.60	19.60	19.60		

- 1) 모터 모델명 □ 안에는 전압코드가 들어갑니다.
- 2) 감속기 모델명 □ 안에는 감속비가 들어갑니다.
- 3) 위의 표에서 색칠된 범위의 감속비를 선택했을 때 감속기의 출력축은 모터의 출력축과 같은 방향으로 회전합니다.  
흰색 바탕 범위의 감속비에서는 감속기 출력축은 모터 출력축의 회전방향과 반대방향으로 회전합니다.
- 4) 회전속도(r/min)는 모터의 동기회전속도(50Hz:1500r/min, 60Hz:1800r/min)를 감속비로 나누어 계산합니다. 실제 회전속도는 부하의 크기에 따라 표시보다 2~20% 정도 느립니다.

### 감속기 부착 시 최대허용토크

Motor Model	Gear box Model	회전 속도 r/min	전압 V	주파수 Hz	감속비	3	3.6	5	6	7.5	9	10	12.5	15	18	20	25
9SRDG*~90F2H	9HBK□BH	1200	110	60	kgfcm	17.7	21.3	29.6	35.5	44.3	53.2	59.1	66.6	79.9	95.9	106.6	120.5
					N.m	1.74	2.09	2.90	3.48	4.35	5.22	5.79	6.53	7.83	9.40	10.44	11.80
			220	60	kgfcm	17.7	21.3	29.6	35.5	44.3	53.2	59.1	66.6	79.9	95.9	106.6	120.5
	220/240	50	kgfcm	17.0	20.4	28.4	34.0	42.5	51.0	56.7	63.9	76.7	92.0	102.2	115.5		
	9HFK□BH	90	110	60	kgfcm	7.3	8.7	12.2	14.6	18.2	21.9	24.3	27.4	32.9	39.4	43.8	49.5
					N.m	0.71	0.86	1.19	1.43	1.79	2.14	2.38	2.68	3.22	3.86	4.29	4.85
220			60	kgfcm	7.3	8.7	12.2	14.6	18.2	21.9	24.3	27.4	32.9	39.4	43.8	49.5	
220/240	50	kgfcm	6.8	8.2	11.3	13.6	17.0	20.4	22.7	25.6	30.7	36.8	40.9	46.2			
					N.m	0.67	0.80	1.11	1.33	1.67	2.00	2.22	2.50	3.00	3.61	4.01	4.53

Motor Model	Gear box Model	회전 속도 r/min	전압 V	주파수 Hz	감속비	30	36	40	50	60	75	90	100	120	150	180	200
9SRDG*~90F2H	9HBK□BH	1200	110	60	kgfcm	144.5	173.4	192.7	240.9	289.1	300.0	300.0	300.0	300.0	300.0	300.0	300.0
					N.m	14.16	17.00	18.89	23.61	28.33	29.40	29.40	29.40	29.40	29.40	29.40	29.40
			220	60	kgfcm	144.5	173.4	192.7	240.9	289.1	300.0	300.0	300.0	300.0	300.0	300.0	300.0
	220/240	50	kgfcm	138.6	166.3	184.8	231.0	277.2	300.0	300.0	300.0	300.0	300.0	300.0	300.0	300.0	300.0
	9HFK□BH	90	110	60	kgfcm	59.4	71.3	79.2	99.0	118.8	132.8	159.3	177.0	212.4	265.5	300.0	300.0
					N.m	5.82	6.99	7.76	9.70	11.64	13.01	15.61	17.35	20.82	26.02	29.40	29.40
220			60	kgfcm	59.4	71.3	79.2	99.0	118.8	132.8	159.3	177.0	212.4	265.5	300.0	300.0	
220/240	50	kgfcm	55.4	66.5	73.9	92.4	110.9	123.9	148.7	165.2	198.2	247.8	297.4	300.0			
					N.m	5.43	6.52	7.24	9.06	10.87	12.14	14.57	16.19	19.43	24.28	29.14	29.40

Motor Model	Gearbox Model	회전속도 r/min	전압 V	주파수 Hz	감속비	10	12	15	18	25	30	36	50	60
9SRDG*~90F2W	9WD□BL/□BR/□BRL	1200	110	60	kgfcm	59.9	70.1	84.3	97.2	127.8	144.5	153.1	142.9	122.4
					N.m	5.87	6.87	8.26	9.53	12.52	14.16	15.00	14.00	12.00
			220	60	kgfcm	59.9	70.1	84.3	97.2	127.8	144.5	153.1	142.9	122.4
		220/240	50	kgfcm	61.5	72.0	86.6	99.9	131.3	148.5	153.1	142.9	122.4	
		90	110	60	kgfcm	24.6	28.8	34.7	40.0	52.5	59.4	69.1	90.0	99.0
					N.m	2.41	2.82	3.40	3.92	5.15	5.82	6.77	8.82	9.70
220	60		kgfcm	24.6	28.8	34.7	40.0	52.5	59.4	69.1	90.0	99.0		
220/240	50	kgfcm	27.1	31.7	38.1	44.0	57.8	65.3	76.0	99.0	108.9			
					N.m	2.65	3.10	3.74	4.31	5.66	6.40	7.45	9.70	10.67

Motor Model	Gearbox Model	회전속도 r/min	전압 V	주파수 Hz	감속비	7.5	10	15	20	25	30	40	50	60	80
9SRG*~90F2WH	9WHD□-030	1200	110	60	kgfcm	36.8	47.3	66.6	84.1	96.4	112.1	137.8	157.7	163.3	132.7
					N.m	3.61	4.64	6.52	8.24	9.44	10.99	13.51	15.45	16.00	13.00
			220	60	kgfcm	36.8	47.3	66.6	84.1	96.4	112.1	137.8	157.7	163.3	163.3
		220/240	50	kgfcm	37.8	48.6	68.4	86.4	99.0	115.2	141.6	162.0	163.3	163.3	132.7
		90	110	60	kgfcm	15.1	19.4	27.4	34.6	39.6	46.1	56.6	64.8	72.0	84.5
					N.m	1.48	1.91	2.68	3.39	3.88	4.52	5.55	6.35	7.06	8.28
220	60		kgfcm	15.1	19.4	27.4	34.6	39.6	46.1	56.6	64.8	72.0	84.5		
220/240	50	kgfcm	16.6	21.4	30.1	38.0	43.6	50.7	62.3	71.3	79.2	92.9			
					N.m	1.63	2.10	2.95	3.73	4.27	4.97	6.11	6.99	7.76	9.11





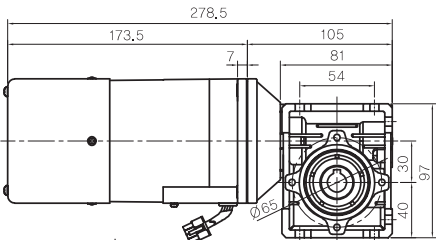
# B AC Motors

## S.C. Reversible Motor 90W (□90mm)

### Dimensions

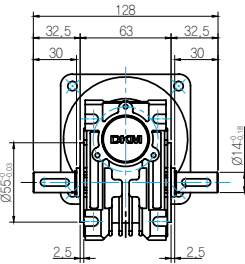
#### WH TYPE GEARBOX

MOTOR MODEL:  
9SRDG□-90F2WH (POWERFUL FAN)

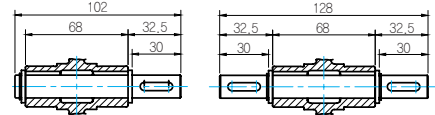


LEAD WIRE ASS'Y 300mm  
MOTOR UL STYLE NO.3271 AWG NO.22  
T.G UL STYLE NO.1007 AWG No.22

GEARBOX MODEL:  
9WHD□-030

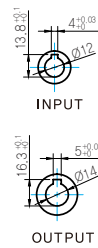


SHAFT



한방향

양방향



INPUT

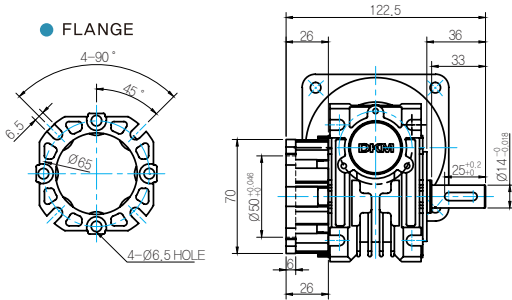
OUTPUT

#### WEIGHT

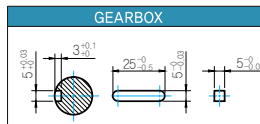
PART	WEIGHT(Kg)
MOTOR	3,5
9PB(F)K2BH - 9PB(F)K10BH	1,28
9PB(F)K12.5BH - 9PB(F)K20BH	1,3
9PB(F)K25BH - 9PB(F)K60BH	1,45
9PB(F)K75BH - 9PB(F)K200BH	1,47
9HB(F)K3BH - 9HB(F)K10BH	1,62
9HB(F)K12.5BH - 9HB(F)K20BH	1,68
9HB(F)K25BH - 9HB(F)K60BH	1,73
9HB(F)K75BH - 9HB(F)K200BH	1,78
9WD□BL/BR/BRL	1,0
9WHD□-030	1,2
9XD10□□	0,6

\* 출력 FLANGE와 SHAFT는 별매입니다.

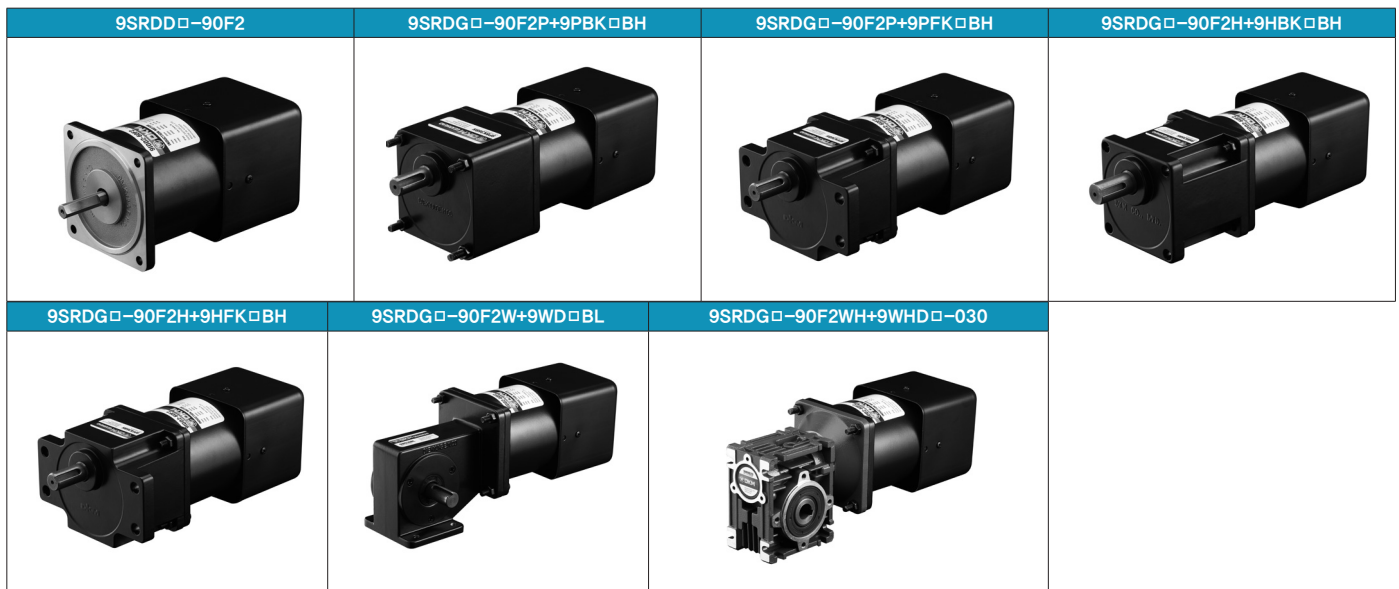
FLANGE



KEY SPEC



### Motor Images



## S.C. Reversible Motor 120W (□90mm)

# 120W

Speed Control  
Reversible Motor  
120W(□90mm)

### Motor 사양

Model 9SRDG*-120F2□: Gear Type Shaft 9SRDD*-120F2: D-Cut Type Shaft 9SRDK*-120F2: Key Type Shaft	Output W	Voltage V	Frequency Hz	Poles	Duty	Speed Range r/min	Starting Torque		Permissible Torque				Capacitor μF / VAC
									1200r/min		90r/min		
									kgfcm	N.m	kgfcm	N.m	
9SRDG1(A)-120F2□	120	1∅110	60	4	30min.	90-1700	7.80	0.780	8.20	0.820	3.60	0.360	30.0 / 250
9SRDG2(D)-120F2□	120	1∅220	60	4	30min.	90-1700	7.60	0.760	8.00	0.800	3.30	0.330	7.0 / 450
9SRDGE-120F2□	120	1∅220	50	4	30min.	90-1400	6.00	0.600	7.50	0.750	3.30	0.330	7.0 / 450
		1∅240					6.50	0.650	8.00	0.800	3.80	0.380	

- 1) 모터 모델명 \* 자리에는 전압코드가, □ 안에는 부착되는 감속기의 모델 타입명이 들어갑니다.
- 2) 전압코드 A, D, E는 TP(Thermal Protector) 부착 사양입니다.
- 3) Gear Type Shaft는 감속기 부착용이며 D-Cut & Key Type Shaft는 모터 단독 사용시의 출력축 입니다.

### 감속기 부착 시 최대허용토크

Motor Model	Gearbox Model	회전 속도 r/min	전압 V	주파수 Hz	감속비	2	3	3.6	5	6	7.5	9	10	12.5	15	18	20
9SRDG*-120F2P	9PBK□BH 9PFK□BH	1200	110	60	kgfcm	13.3	19.9	23.9	33.2	39.9	49.8	59.8	66.4	74.8	89.8	107.7	119.7
					N.m	1.30	1.95	2.34	3.25	3.91	4.88	5.86	6.51	7.33	8.80	10.56	11.73
					kgfcm	13.0	19.4	23.3	32.4	38.9	48.6	58.3	64.8	73.0	87.6	105.1	116.8
		N.m	1.27	1.91	2.29	3.18	3.81	4.76	5.72	6.35	7.15	8.58	10.30	11.45			
		kgfcm	12.2	18.2	21.9	30.4	36.5	45.6	54.7	60.8	68.4	82.1	98.6	109.5			
		N.m	1.19	1.79	2.14	2.98	3.57	4.47	5.36	5.95	6.71	8.05	9.66	10.73			
90	110	60	kgfcm	5.8	8.7	10.5	14.6	17.5	21.9	26.2	29.2	32.9	39.4	47.3	52.6		
			N.m	0.57	0.86	1.03	1.43	1.71	2.14	2.57	2.86	3.22	3.86	4.64	5.15		
			kgfcm	5.3	8.0	9.6	13.4	16.0	20.0	24.1	26.7	30.1	36.1	43.4	48.2		
N.m	0.52	0.79	0.94	1.31	1.57	1.96	2.36	2.62	2.95	3.54	4.25	4.72					
kgfcm	5.3	8.0	9.6	13.4	16.0	20.0	24.1	26.7	30.1	36.1	43.4	48.2					
N.m	0.52	0.79	0.94	1.31	1.57	1.96	2.36	2.62	2.95	3.54	4.25	4.72					

Motor Model	Gearbox Model	회전 속도 r/min	전압 V	주파수 Hz	감속비	25	30	36	40	50	60	75	90	100	120	150	180	200				
9SRDG*-120F2P	9PBK□BH 9PFK□BH	1200	110	60	kgfcm	135.3	162.4	194.8	200.0	200.0	200.0	200.0	200.0	200.0	200.0	200.0	200.0	200.0	200.0			
					N.m	13.26	15.91	19.09	19.60	19.60	19.60	19.60	19.60	19.60	19.60	19.60	19.60	19.60	19.60	19.60	19.60	
					kgfcm	132.0	158.4	190.1	200.0	200.0	200.0	200.0	200.0	200.0	200.0	200.0	200.0	200.0	200.0	200.0	200.0	200.0
					N.m	12.94	15.52	18.63	19.60	19.60	19.60	19.60	19.60	19.60	19.60	19.60	19.60	19.60	19.60	19.60	19.60	19.60
					kgfcm	123.8	148.5	178.2	198.0	200.0	200.0	200.0	200.0	200.0	200.0	200.0	200.0	200.0	200.0	200.0	200.0	200.0
					N.m	12.13	14.55	17.46	19.40	19.60	19.60	19.60	19.60	19.60	19.60	19.60	19.60	19.60	19.60	19.60	19.60	19.60
		90	110	60	kgfcm	59.4	71.3	85.5	95.0	118.8	142.6	159.3	191.2	200.0	200.0	200.0	200.0	200.0	200.0	200.0	200.0	
					N.m	5.82	6.99	8.38	9.31	11.64	13.97	15.61	18.73	19.60	19.60	19.60	19.60	19.60	19.60	19.60	19.60	
					kgfcm	54.5	65.3	78.4	87.1	108.9	130.7	146.0	175.2	194.7	200.0	200.0	200.0	200.0	200.0	200.0	200.0	
					N.m	5.34	6.40	7.68	8.54	10.67	12.81	14.31	17.17	19.08	19.60	19.60	19.60	19.60	19.60	19.60	19.60	
					kgfcm	54.5	65.3	78.4	87.1	108.9	130.7	146.0	175.2	194.7	200.0	200.0	200.0	200.0	200.0	200.0	200.0	
					N.m	5.34	6.40	7.68	8.54	10.67	12.81	14.31	17.17	19.08	19.60	19.60	19.60	19.60	19.60	19.60	19.60	

- 1) 모터 모델명 □ 안에는 전압코드가 들어갑니다.
- 2) 감속기 모델명 □ 안에는 감속비가 들어갑니다.
- 3) 위의 표에서 색칠된 범위의 감속비를 선택했을 때 감속기의 출력축은 모터의 출력축과 같은 방향으로 회전합니다.  
흰색 바탕 범위의 감속비에서는 감속기 출력축은 모터 출력축의 회전방향과 반대방향으로 회전합니다.
- 4) 회전속도(r/min)는 모터의 동기회전속도(50Hz:1500r/min, 60Hz:1800r/min)를 감속비로 나누어 계산합니다. 실제 회전속도는 부하의 크기에 따라 표시보다 2~20% 정도 느립니다.

### 감속기 부착 시 최대허용토크

Motor Model	Gear box Model	회전 속도 r/min	전압 V	주파수 Hz	감속비	3	3.6	5	6	7.5	9	10	12.5	15	18	20	25
9SRDG*~120F2H	9HBK□ BH 9HFK□ BH	1200	110	60	kgfcm	19.9	23.9	33.2	39.9	49.8	59.8	66.4	74.8	89.8	107.7	119.7	135.3
					N.m	1.95	2.34	3.25	3.91	4.88	5.86	6.51	7.33	8.80	10.56	11.73	13.26
			220	60	kgfcm	19.4	23.3	32.4	38.9	48.6	58.3	64.8	73.0	87.6	105.1	116.8	132.0
		220/240	50	kgfcm	18.2	21.9	30.4	36.5	45.6	54.7	60.8	68.4	82.1	98.6	109.5	123.8	
		110	60	kgfcm	8.7	10.5	14.6	17.5	21.9	26.2	29.2	32.9	39.4	47.3	52.6	59.4	
		220	60	kgfcm	8.0	9.6	13.4	16.0	20.0	24.1	26.7	30.1	36.1	43.4	48.2	54.5	
220/240	50	kgfcm	8.0	9.6	13.4	16.0	20.0	24.1	26.7	30.1	36.1	43.4	48.2	54.5			
					N.m	0.79	0.94	1.31	1.57	1.96	2.36	2.62	2.95	3.54	4.25	4.72	5.34
					N.m	0.79	0.94	1.31	1.57	1.96	2.36	2.62	2.95	3.54	4.25	4.72	5.34

Motor Model	Gear box Model	회전 속도 r/min	전압 V	주파수 Hz	감속비	30	36	40	50	60	75	90	100	120	150	180	200	
9SRDG*~120F2H	9HBK□ BH 9HFK□ BH	1200	110	60	kgfcm	162.4	194.8	216.5	270.6	300.0	300.0	300.0	300.0	300.0	300.0	300.0	300.0	
					N.m	15.91	19.09	21.22	26.52	29.40	29.40	29.40	29.40	29.40	29.40	29.40	29.40	29.40
			220	60	kgfcm	158.4	190.1	211.2	264.0	300.0	300.0	300.0	300.0	300.0	300.0	300.0	300.0	300.0
		220/240	50	kgfcm	148.5	178.2	198.0	247.5	297.0	300.0	300.0	300.0	300.0	300.0	300.0	300.0	300.0	300.0
		110	60	kgfcm	71.3	85.5	95.0	118.8	142.6	159.3	191.2	212.4	254.9	300.0	300.0	300.0	300.0	
		220	60	kgfcm	65.3	78.4	87.1	108.9	130.7	146.0	175.2	194.7	233.6	292.1	300.0	300.0	300.0	
220/240	50	kgfcm	65.3	78.4	87.1	108.9	130.7	146.0	175.2	194.7	233.6	292.1	300.0	300.0	300.0			
					N.m	6.40	7.68	8.54	10.67	12.81	14.31	17.17	19.08	22.90	28.62	29.40	29.40	
					N.m	6.40	7.68	8.54	10.67	12.81	14.31	17.17	19.08	22.90	28.62	29.40	29.40	

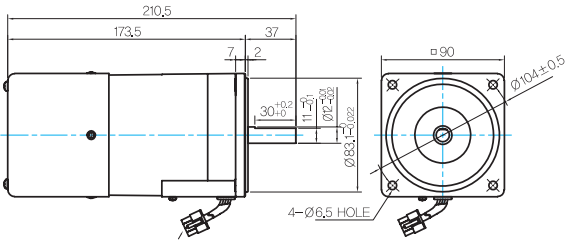
Motor Model	Gearbox Model	회전속도 r/min	전압 V	주파수 Hz	감속비	10	12	15	18	25	30	36	50	60
9SRDG*~120F2W	9WD□BL/□BR/□BRL	1200	110	60	kgfcm	67.2	78.7	94.7	109.2	143.5	162.4	153.1	142.9	122.4
					N.m	6.59	7.71	9.28	10.70	14.06	15.91	15.00	14.00	12.00
			220	60	kgfcm	65.6	76.8	92.4	106.6	140.0	158.4	153.1	142.9	122.4
		220/240	50	kgfcm	61.5	72.0	86.6	99.9	131.3	148.5	153.1	142.9	122.4	
		110	60	kgfcm	29.5	34.6	41.6	48.0	63.0	71.3	82.9	108.0	122.4	
		220	60	kgfcm	27.1	31.7	38.1	44.0	57.8	65.3	76.0	99.0	122.4	
220/240	50	kgfcm	27.1	31.7	38.1	44.0	57.8	65.3	76.0	99.0	122.4			
					N.m	2.65	3.10	3.74	4.31	5.66	6.40	7.45	9.70	12.00
					N.m	2.65	3.10	3.74	4.31	5.66	6.40	7.45	9.70	12.00

Motor Model	Gearbox Model	회전속도 r/min	전압 V	주파수 Hz	감속비	7.5	10	15	20	25	30	40	50	60	80
9SRDG*~120F2WH	9WHD□	1200	110	60	kgfcm	41.3	53.1	74.8	94.5	108.2	126.0	154.8	173.5	163.3	132.7
					N.m	4.05	5.21	7.33	9.26	10.61	12.34	15.17	17.00	16.00	13.00
			220	60	kgfcm	40.3	51.8	73.0	92.2	105.6	122.9	151.0	173.5	163.3	132.7
		220/240	50	kgfcm	40.3	51.8	73.0	92.2	105.6	122.9	151.0	173.5	163.3	132.7	
		110	60	kgfcm	18.1	23.3	32.8	41.5	47.5	55.3	68.0	77.8	86.4	101.4	
		220	60	kgfcm	16.6	21.4	30.1	38.0	43.6	50.7	62.3	71.3	79.2	92.9	
220/240	50	kgfcm	19.2	24.6	34.7	43.8	50.2	58.4	71.7	82.1	91.2	107.0			
					N.m	1.88	2.41	3.40	4.29	4.92	5.72	7.03	8.04	8.94	10.49
					N.m	1.88	2.41	3.40	4.29	4.92	5.72	7.03	8.04	8.94	10.49

## Dimensions

### MOTOR ONLY

- MOTOR MODEL:  
9SRDD□-120F2 (POWERFUL FAN)

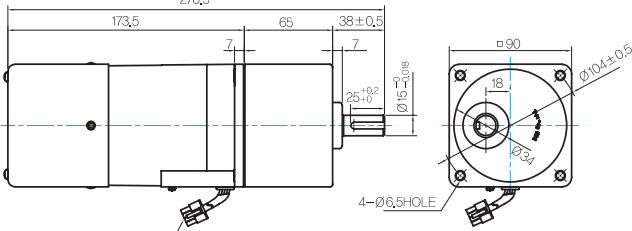


LEAD WIRE ASS Y 300mm  
MOTOR UL STYLE NO.3271 AWG No.20  
T,G UL STYLE NO.1007 AWG No.22

### GEARED MOTOR

#### P TYPE GEARBOX

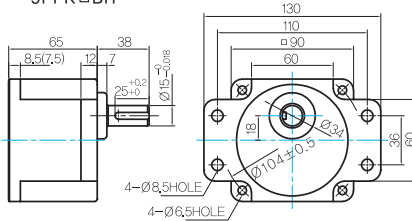
- MOTOR MODEL:  
9SRDG□-120F2P (POWERFUL FAN)



LEAD WIRE ASS Y 300mm  
MOTOR UL STYLE NO.3271 AWG No.20  
T,G UL STYLE NO.1007 AWG No.22

- GEARBOX MODEL:  
9PBK□BH

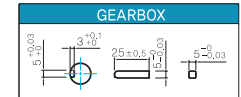
- GEARBOX MODEL:  
9PFK□BH



- GEARBOX OUTPUT SHAFT

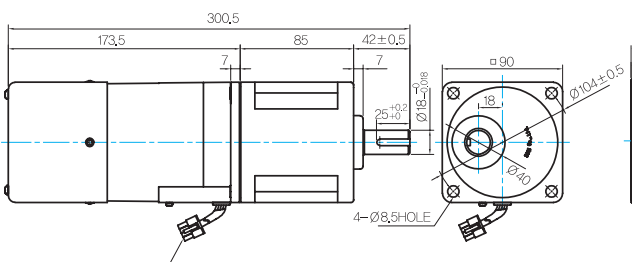
MODEL	SPEC
KEY TYPE	38
9PBK□BH	25±0.2
9PFK□BH	15±0.08

- KEY SPEC



#### H TYPE GEARBOX

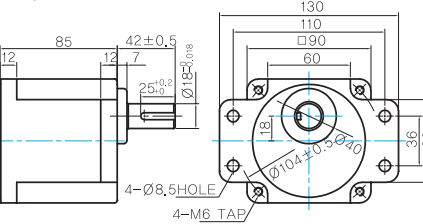
- MOTOR MODEL:  
9SRDG□-120F2H (POWERFUL FAN)



LEAD WIRE ASS Y 300mm  
MOTOR UL STYLE NO.3271 AWG No.20  
T,G UL STYLE NO.1007 AWG No.22

- GEARBOX MODEL:  
9HBK□BH

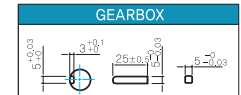
- GEARBOX MODEL:  
9HFK□BH



- GEARBOX OUTPUT SHAFT

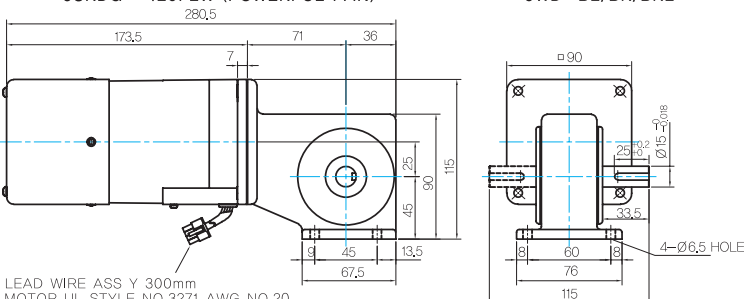
MODEL	SPEC
KEY TYPE	42
9HBK□BH	25±0.2
9HFK□BH	18±0.08

- KEY SPEC



#### W TYPE GEARBOX

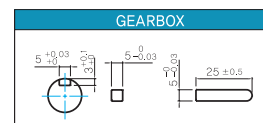
- MOTOR MODEL:  
9SRDG□-120F2W (POWERFUL FAN)



LEAD WIRE ASS Y 300mm  
MOTOR UL STYLE NO.3271 AWG No.20  
T,G UL STYLE NO.1007 AWG No.22

- GEARBOX MODEL:  
9WD□BL/BR/BRL

- KEY SPEC



# B AC Motors

## S.C. Reversible Motor 120W (□90mm)

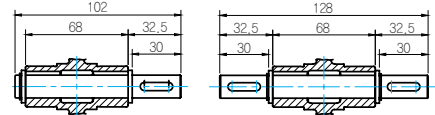
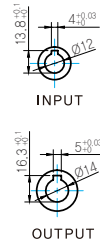
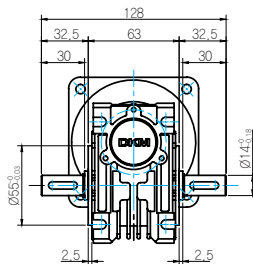
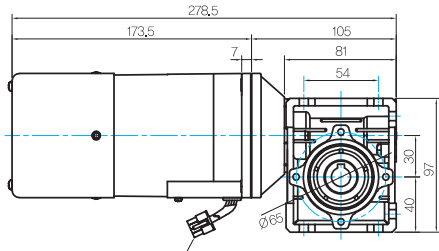
### Dimensions

#### WH TYPE GEARBOX

● MOTOR MODEL:  
9SRDG□-120F2WH (POWERFUL FAN)

● GEARBOX MODEL:  
9WHD□-030

● SHAFT

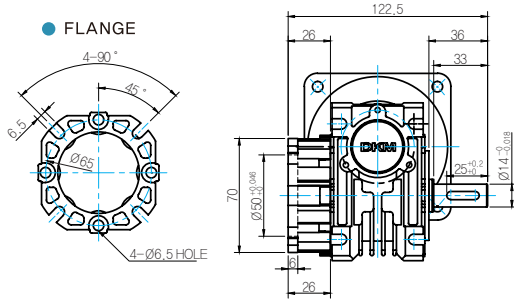


한방향

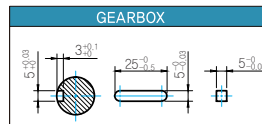
양방향

LEAD WIRE ASS'Y 300mm  
MOTOR UL STYLE NO.3271 AWG NO.20  
T,G UL STYLE NO.1007 AWG No.22

● FLANGE



● KEY SPEC



#### WEIGHT

PART		WEIGHT(Kg)
MOTOR		3.5
GEAR BOX	9PB(F)K2BH - 9PB(F)K10BH	1.28
	9PB(F)K12.5BH - 9PB(F)K20BH	1.3
	9PB(F)K25BH - 9PB(F)K60BH	1.45
	9PB(F)K75BH - 9PB(F)K200BH	1.47
	9HB(F)K3BH - 9HB(F)K10BH	1.62
	9HB(F)K12.5BH - 9HB(F)K20BH	1.68
	9HB(F)K25BH - 9HB(F)K60BH	1.73
	9HB(F)K75BH - 9HB(F)K200BH	1.78
	9WD□BL/BR/BRL	1.0
	9WHD□-030	1.2
9XD10□	0.6	

\* 출력 FLANGE와 SHAFT는 별매입니다.

### Motor Images

